

eView Setup Instructions



Table of Contents

Purpose	3
Before you begin.....	3
Create the eView folder	3
Copy the eView Files.....	3
Paste the eView Files	3
Configure the Web Server	3
Windows NT 4.0 Web Configuration:	4
Window 2000 Web Configuration:	5
Setting eView Properties:	6
Setting the Default Web Site Properties:	7
Close Internet Information Manager/Computer Management:	7
Starting eView	7
Setting Up eView:.....	8
Setting the Volume Units:.....	8
Finishing Setup:	8
Using eView.	8
Logging In to eView:	8
eView Main Screen:.....	8

Purpose

This document describes the setup and operation instructions for the eView web site. eView allows you to view your DDMS database through a web browser.

Before you begin

Make sure you have completed the “Database Driver Setup Instructions” and the “Web Server Setup Instructions” before following these steps.

Make sure the ePower CD is in your CD drive.

Make sure you are familiar with the database locations on your DDMS. You should open a DDMS client and print the L0 parameters screen that contains the locations of your DDMS database.

Create the eView folder

Double click My Computer.

Double click your C drive (this may be a different drive if you installed your web server somewhere else).

Find the INETPUB folder and double click it.

Find the WWWROOT folder and double click it.

In the WWWROOT folder, choose File – New – Folder.

Name the folder eView.

Double click the new eView folder.

Minimize this window.

Copy the eView Files

Double click My Computer.

Double click your CD drive.

Double click the eView folder.

Choose Edit – Select All.

Choose Edit – Copy.

Close this window.

Paste the eView Files

Reopen the minimized window containing the eView folder you created.

Choose File – Paste.

This will copy the eView files from the ePower CD to your web server folder.

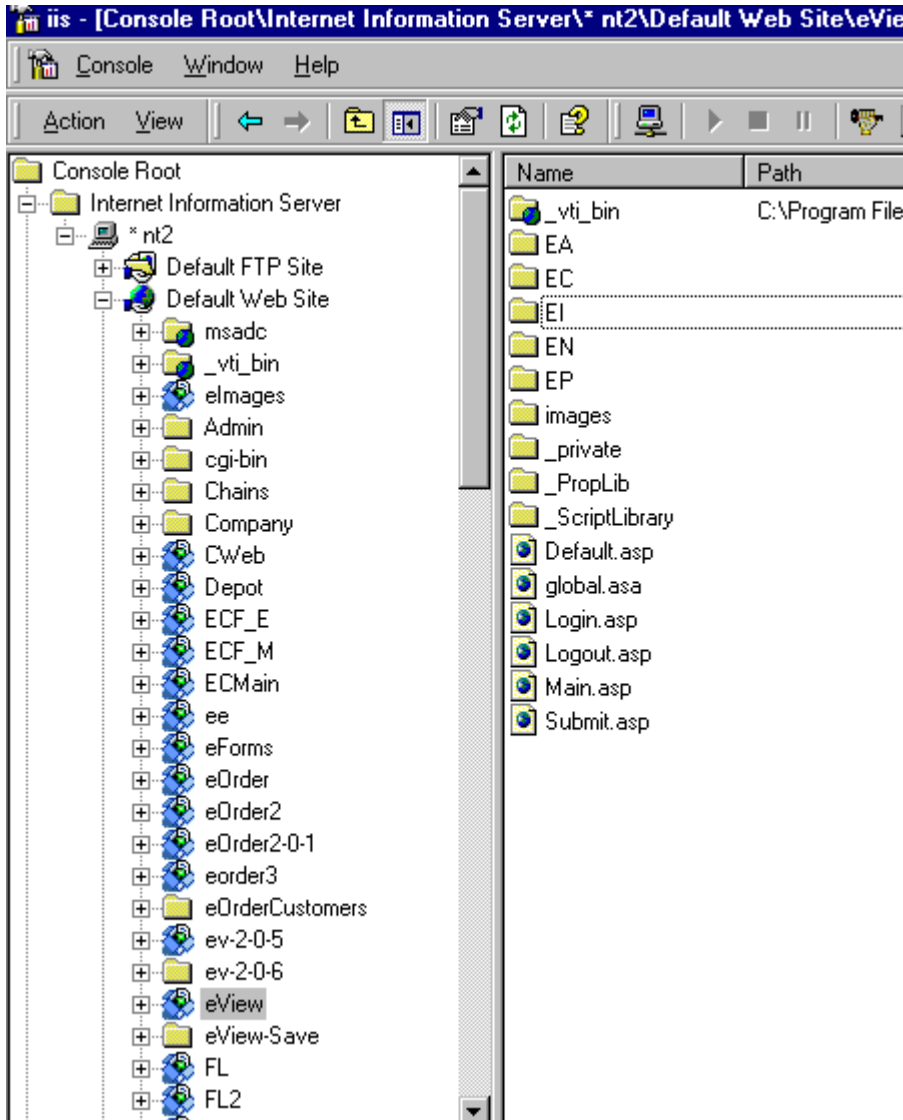
Configure the Web Server

You should check and change if necessary the web server settings. How you access the web server configuration depends upon the operating system you are using.

Windows NT 4.0 Web Configuration:

Choose Start – Programs – Windows NT 4.0 Option Pack – Microsoft Internet Information Server – Internet Service Manager.

You should see a screen similar to this. You may need to expand the groups by clicking the plus signs until you see Default Web Site and then make sure this item is expanded as well.

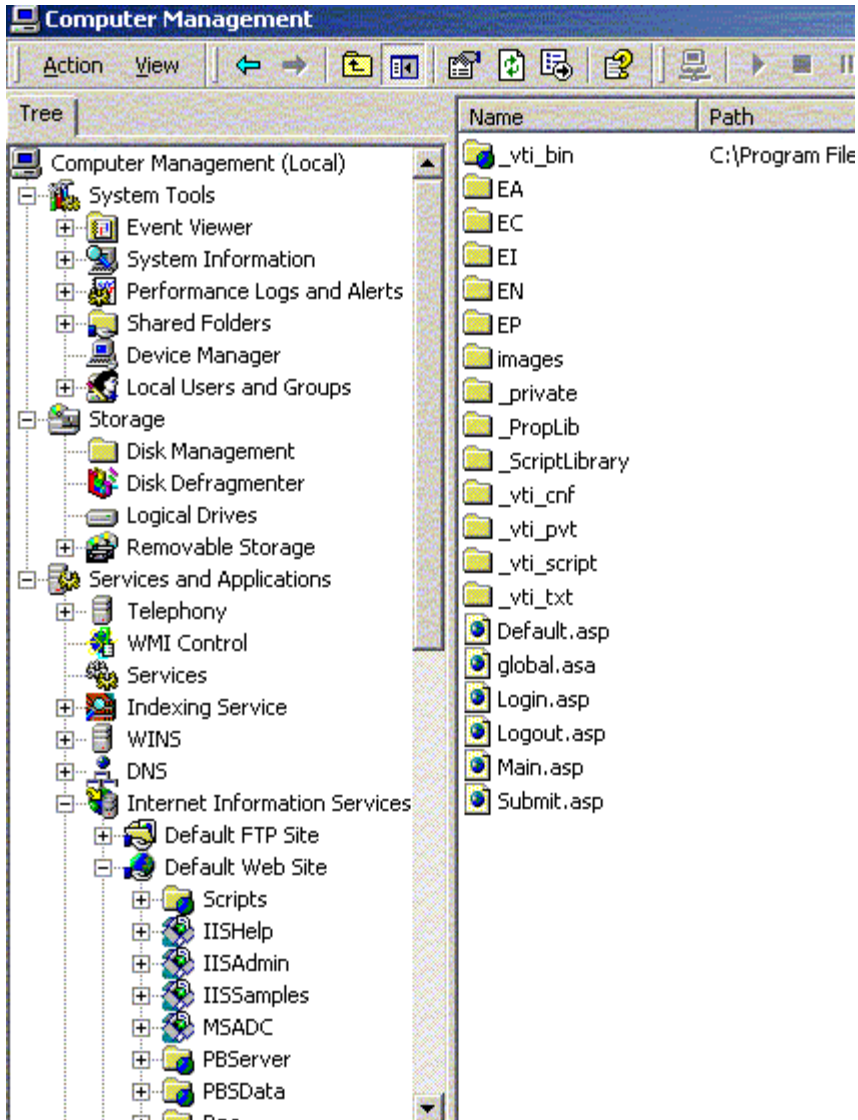


Scroll down until you see the eView folder in the list under default web site. Right click on the eView folder and then choose Properties from the pop-up menu.

Windows 2000 Web Configuration:

Right click on My Computer and choose manage from the pop-up menu.

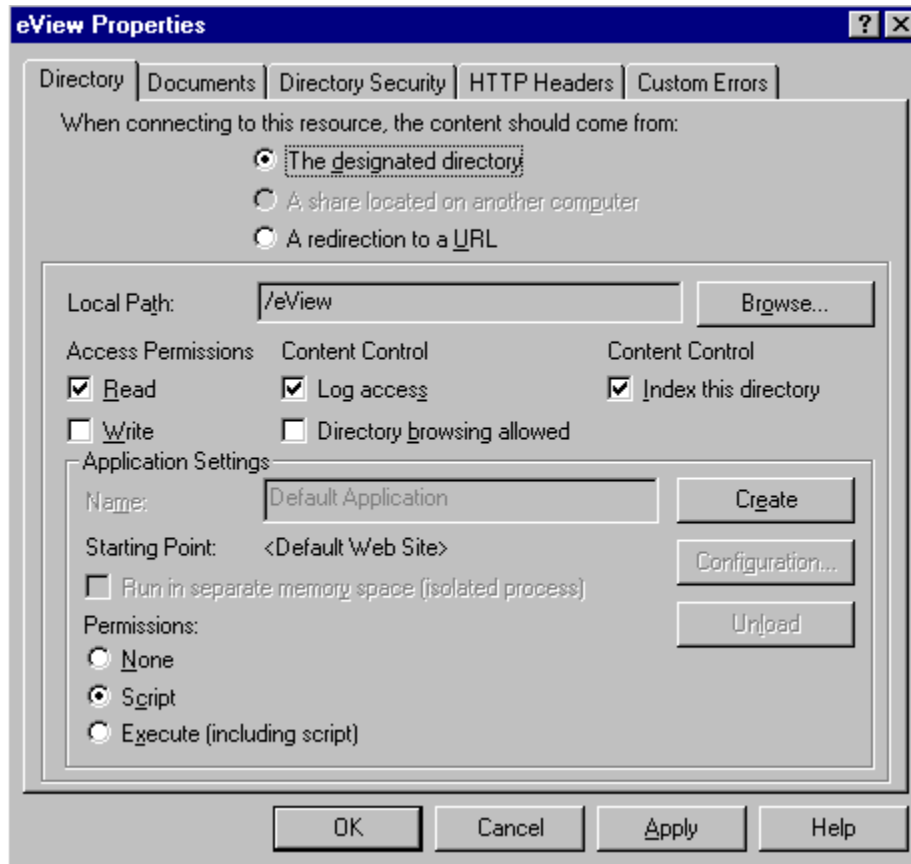
You should see a screen similar to this. You may need to expand the groups by clicking the plus signs until you see Default Web Site and then make sure this item is expanded as well.



Scroll down until you see the eView folder in the list under default web site. Right click on the eView folder and then choose Properties from the pop-up menu.

Setting eView Properties:

This Properties window is similar on both NT 4.0 and Windows 2000.

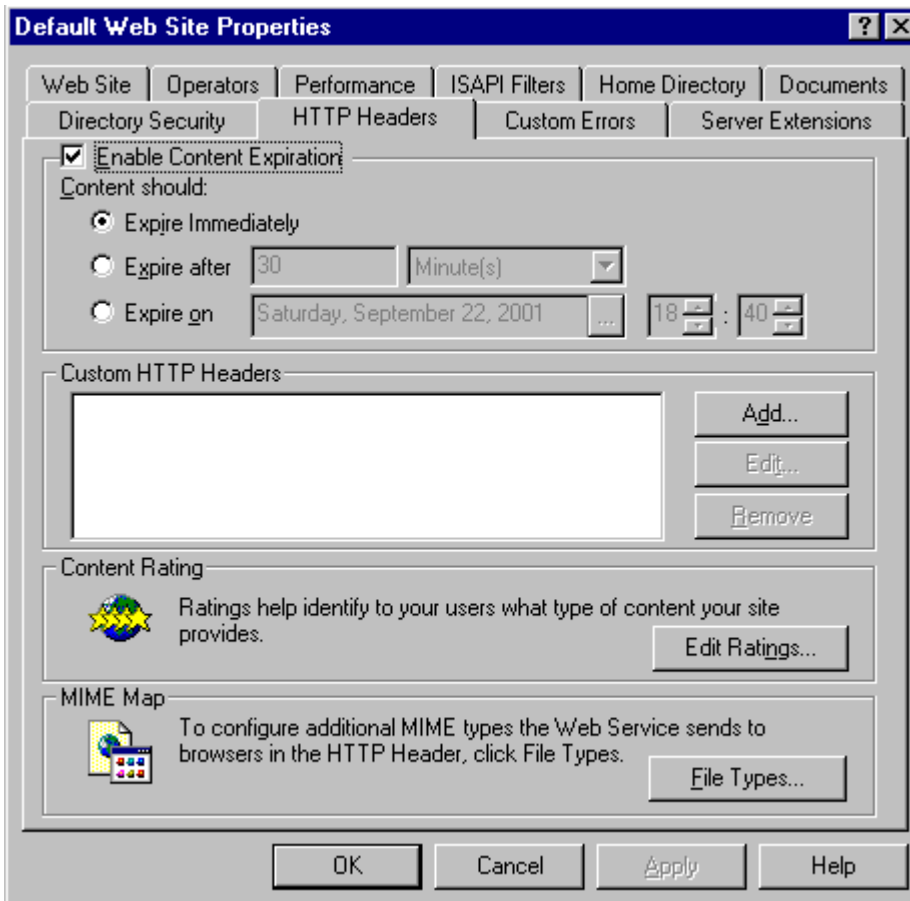


If the Create button is shown on the properties screen, then click it and then type eView in the Name box. Click the OK button to accept and apply the settings.

Setting the Default Web Site Properties:

Find the Default Web Site item in your list. Right click on the Default Web Site and choose Properties from the pop-up menu. When the Properties window appears, choose the HTTP Headers Tab.

This Properties window is similar on both NT 4.0 and Windows 2000:



Make sure the Enable Content Expiration and the Expire Immediately options are selected.

Click the OK button to accept and apply the settings.

Close Internet Information Manager/Computer Management:

Close the Internet Information Manager/Computer Management screens.

Starting eView

Open Internet Explorer. In the address bar type: `http://mycomputername/eview` where my computer name is the network name of this server.

eView should respond with a license agreement.

Scroll to the bottom of this screen read and accept the license agreement.

Setting Up eView:

Since this is a new installation of eView, there is no administration password. Just choose submit to enter eView administration.

Setting the Volume Units:

Click the Volume Units link to set the eView volume units. Not all of the volume units are required. The screen below shows example settings and those units that are required:

Customers:	d:\ddms\13	Personnel:	
A/R:	d:\ddms\sr	Sales Journal:	
Vendors:		Sales History:	
Payables:		Telemarketing:	
Inventory:	d:\ddms\jn	System Volume:	d:\ddms\sr
Inv. History:	d:\ddms\jn	Work Unit:	
Serialized:		Item Aux:	d:\ddms\jn
Purchasing:		Plus:	
Order Entry:		Reports:	
General Ledger:		Contracts:	d:\ddms\16
Sales Rep:	d:\ddms\wp	Wholesaler:	d:\ddms\jn

Be sure to use back slashes (\) in your entries, not forward slashes.

When all the units shown above have been entered, click the Submit button.

eView will check your entries and may pause while these settings are checked.

Finishing Setup:

Click the program options link and set an administration password if you like. Make sure you remember this password! Click the submit button to save your password.

Using eView.

Click the eView link in the upper left corner of the screen. This will open the eView login screen.

Logging In to eView:

Enter a valid order taker on your DDMS system. You can enter your order taker ID in upper or lower case. Do not enter spaces. If your order taker ID is 100, then enter just 100 without any spaces. If you normally enter order taker passwords on your DDMS, then you must enter your order taker password. Click the login button to login to eView.

eView Main Screen:

From the eView main screen, choose an area of your DDMS database to view. Click the link and then enter a customer, contract, or item number to view. eView provides links to relevant information on these screens. Read the on-screen instructions for more information.