

DB2 eContent Import Guide



Table of Contents

Purpose	3
Before You Begin	3
Starting the eContent Import.....	3
Starting From the Server Menu:.....	3
Starting From Windows:.....	3
eContent Import Main Screen	4
Importing S. P. Richards eContent.....	4
Select Primary Source:.....	5
Select Primary S. P. Data File:.....	6
Select S. P. Richards Substitute Item File.....	7
Copy the S. P. Richards Full Size Images:.....	8
Specify the Location of the S. P. Richards Full Size Images:	9
Copy the S. P. Richards Thumbnail Images:	10
Specify the Location of the S. P. Richards Thumbnail Images:.....	11
Finishing the S. P. Richards eContent Import:.....	11
Importing United Stationers eContent	12
Select Primary Source:.....	12
Select United Data File:	13
Copy the United Full Size Images:	14
Specify the Location of the United Full Size Images:	15
Copy the United Thumbnail Images:	16
Specify the Location of the United Thumbnail Images:	17
Finishing the United eContent Import:	18
Next Steps	18

Purpose

This document describes the special eContent Import processor responsible for importing eContent you receive from your wholesaler. You only need to review these instructions if you have installed the DB2 product.

Before You Begin

Make sure you have completed the setup and installation of DB2 before continuing. These instructions require DB2 to be installed and either authorized or operating in evaluation mode. You cannot complete these instructions until you complete the setup and authorization of DB2.

Make sure you have the eContent CD from your wholesaler. You cannot complete these instructions without this CD.

Starting the eContent Import

There are two ways to start the data dictionary processor:

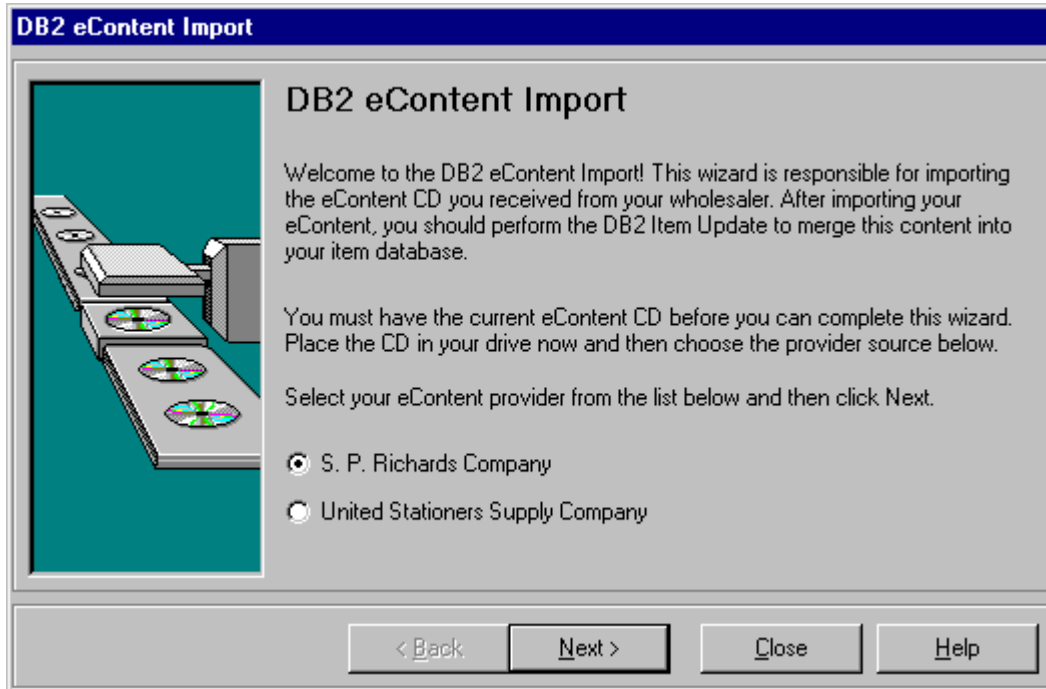
Starting From the Server Menu:

You can start the eContent Import from the server menu contained in the DB2 monitor. By now, you should know how to display the server menu by right clicking on the DB2 monitor icon in your system tray.

Starting From Windows:

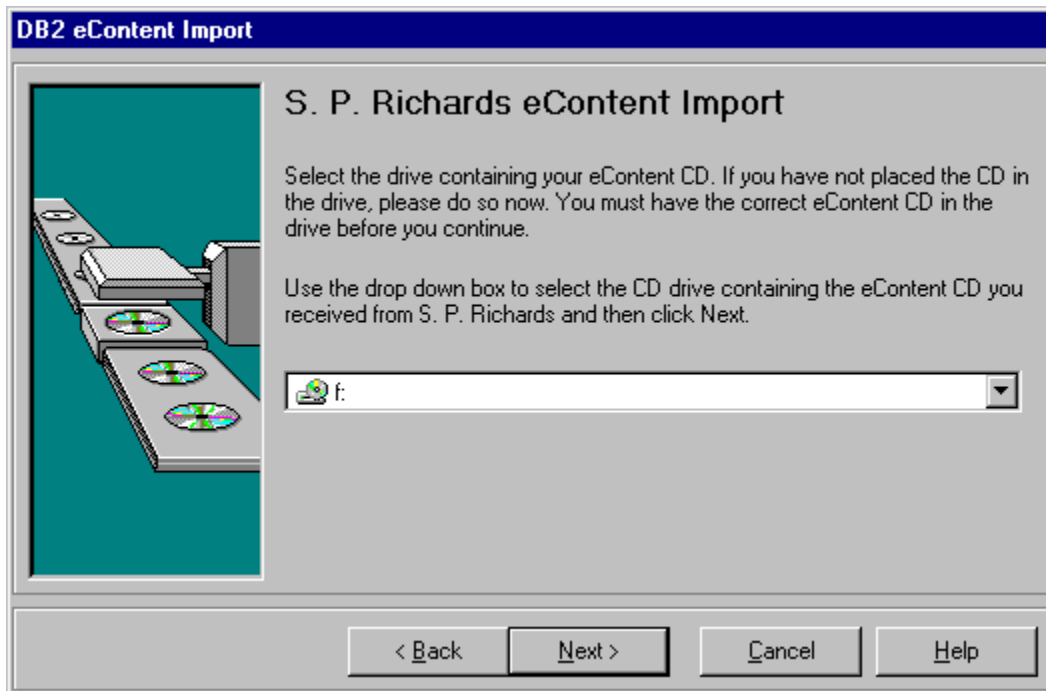
You can also start the eContent Import through the Windows menu system. Choose Start – Programs – OPSsoftware – DB2 eContent Import.

eContent Import Main Screen



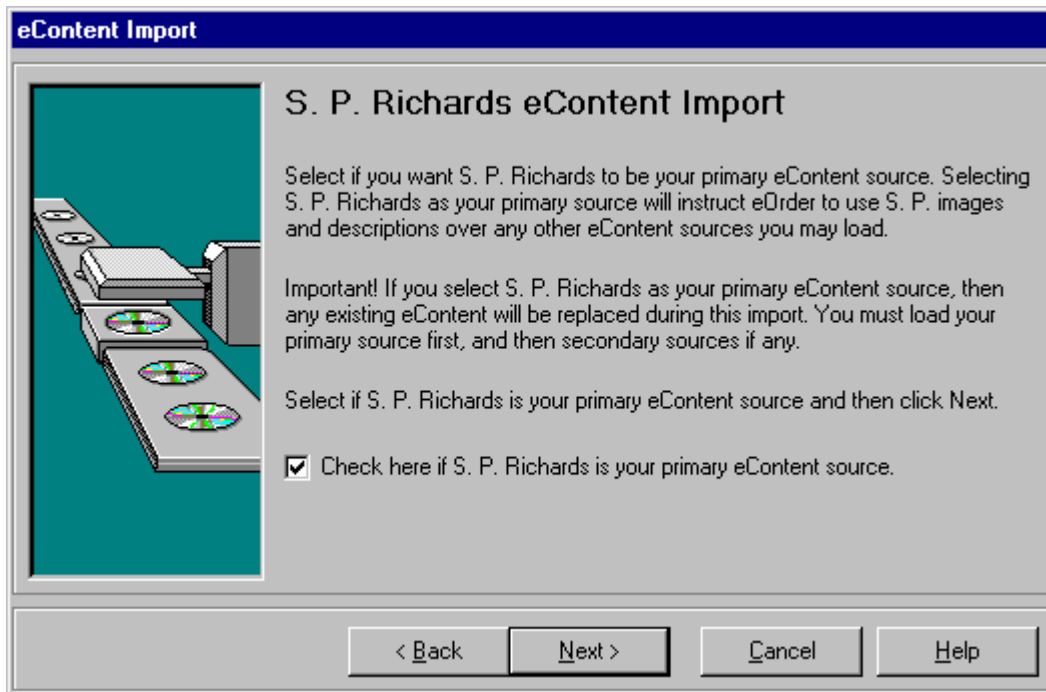
Choose the source provider of your eContent, S. P. Richards or United Stationers and then click next.

Importing S. P. Richards eContent



Select the CD drive containing the S. P. Richards eContent CD. Click Next to continue.

Select Primary Source:



eContent Import

S. P. Richards eContent Import

Select if you want S. P. Richards to be your primary eContent source. Selecting S. P. Richards as your primary source will instruct eOrder to use S. P. images and descriptions over any other eContent sources you may load.

Important! If you select S. P. Richards as your primary eContent source, then any existing eContent will be replaced during this import. You must load your primary source first, and then secondary sources if any.

Select if S. P. Richards is your primary eContent source and then click Next.

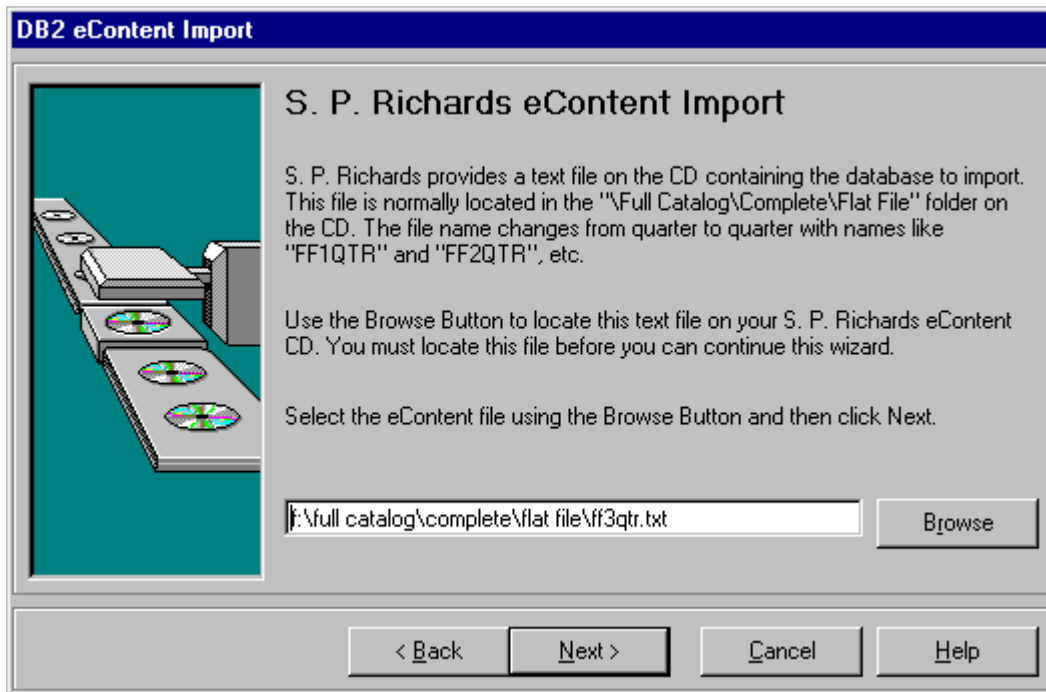
Check here if S. P. Richards is your primary eContent source.

< Back Next > Cancel Help

If S. P. Richards is your primary wholesaler, or if you are loading only a single wholesaler, then be sure to check the primary source check box. This instructs DB2 to use this provider's images and text over any other provider you may load later.

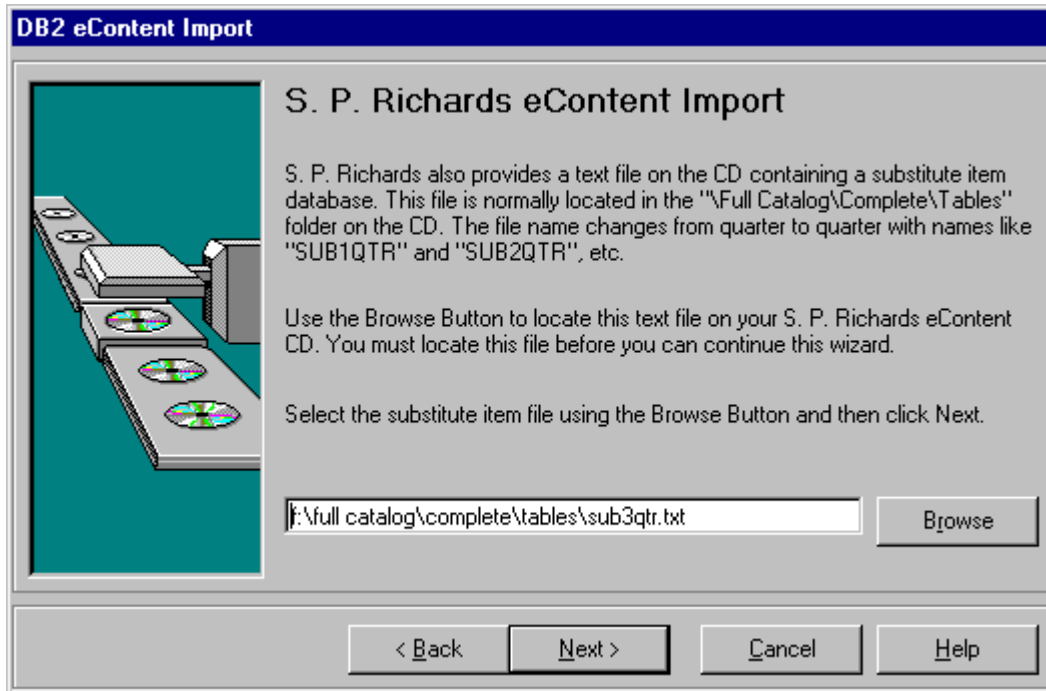
Important! If you plan on loading more than one source, then make sure you load your primary source first, then load any secondary sources.

Select Primary S. P. Data File:



Use this screen to select the primary S. P. Richards data file. This is a text file contained on the CD usually in a folder named: \\Full Catalog\\Complete\\Flat File. The file name changes from quarter to quarter with names like FF1QTR and FF2QTR, etc. You can use the Browse Button to browse the CD locating this file. Click Next to continue importing S. P. Richards eContent.

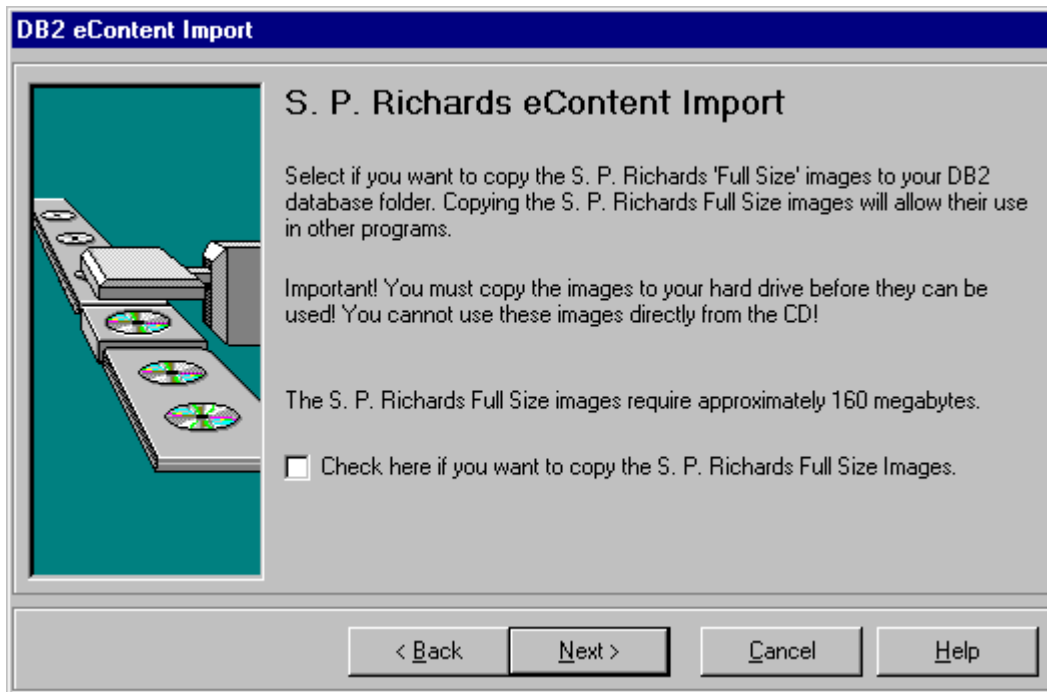
Select S. P. Richards Substitute Item File



S. P. Richards also provides a text file on the CD containing a substitute item file. This file is normally located in the \Full Catalog\Complete\Tables folder on the CD. The file name changes from quarter to quarter with names like SUB1QTR and SUB2QTR, etc. You can use the browse button to locate this file on the CD.

Click Next to continue importing your S. P. Richards eContent.

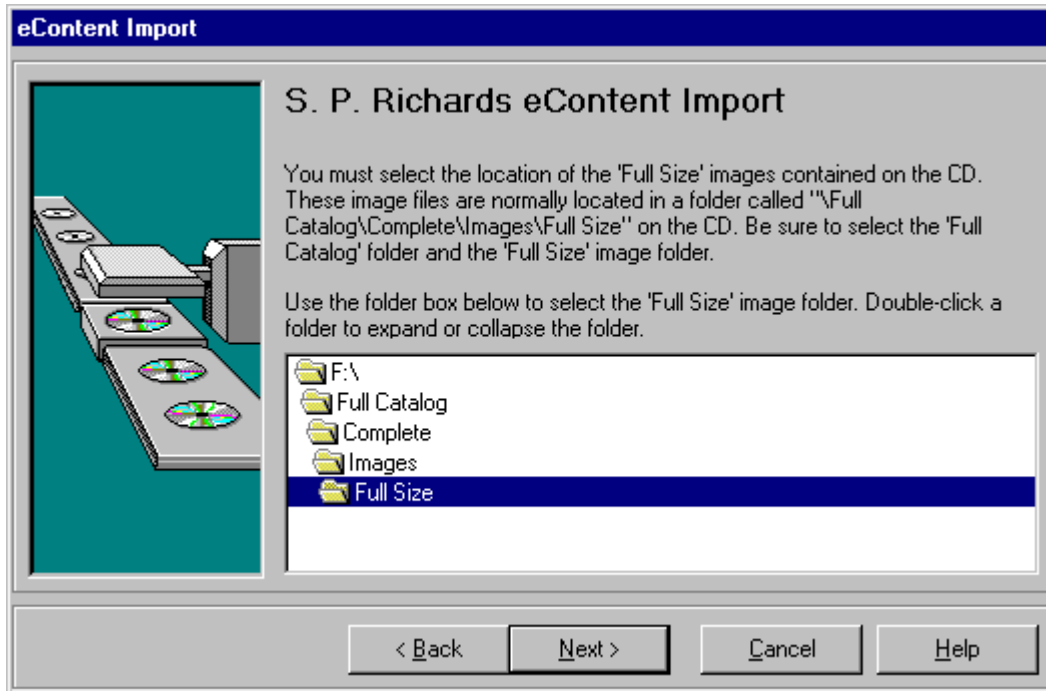
Copy the S. P. Richards Full Size Images:



Select the check box if you want to copy the S. P. Richards full size images to your hard drive. You must copy these images to your hard drive in order to use them. You cannot use these images directly from the CD.

The S. P. Richards full size images require approximately 160 megabytes.

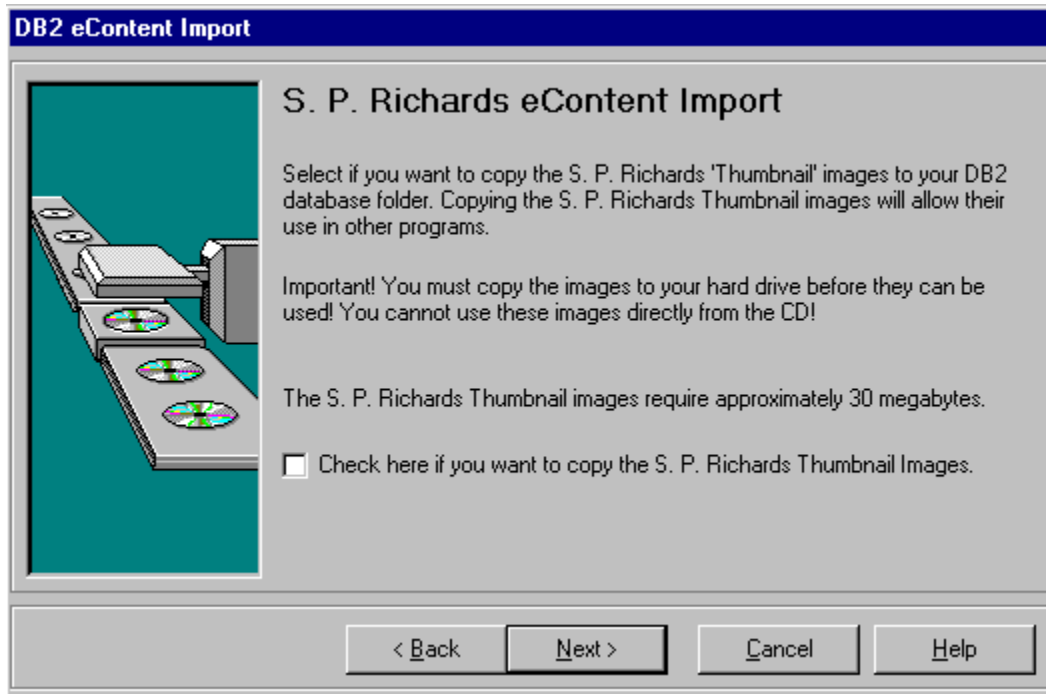
Specify the Location of the S. P. Richards Full Size Images:



Use this screen to locate the S. P. Richards full size images. These images are normally found in the \Full Catalog\Complete\Images\Full Size folder on the CD.

Click Next to continue importing your eContent.

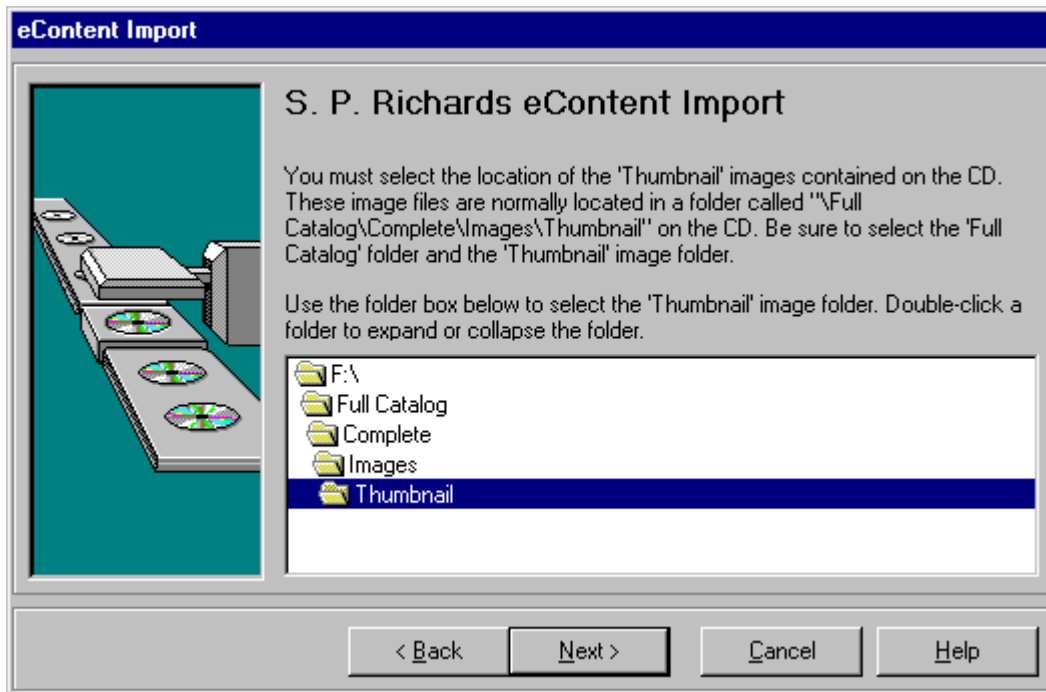
Copy the S. P. Richards Thumbnail Images:



Select the check box if you want to copy the S. P. Richards thumbnail images to your hard drive. You must copy these images to your hard drive in order to use them. You cannot use these images directly from the CD.

The S. P. Richards thumbnail images require approximately 30 megabytes.

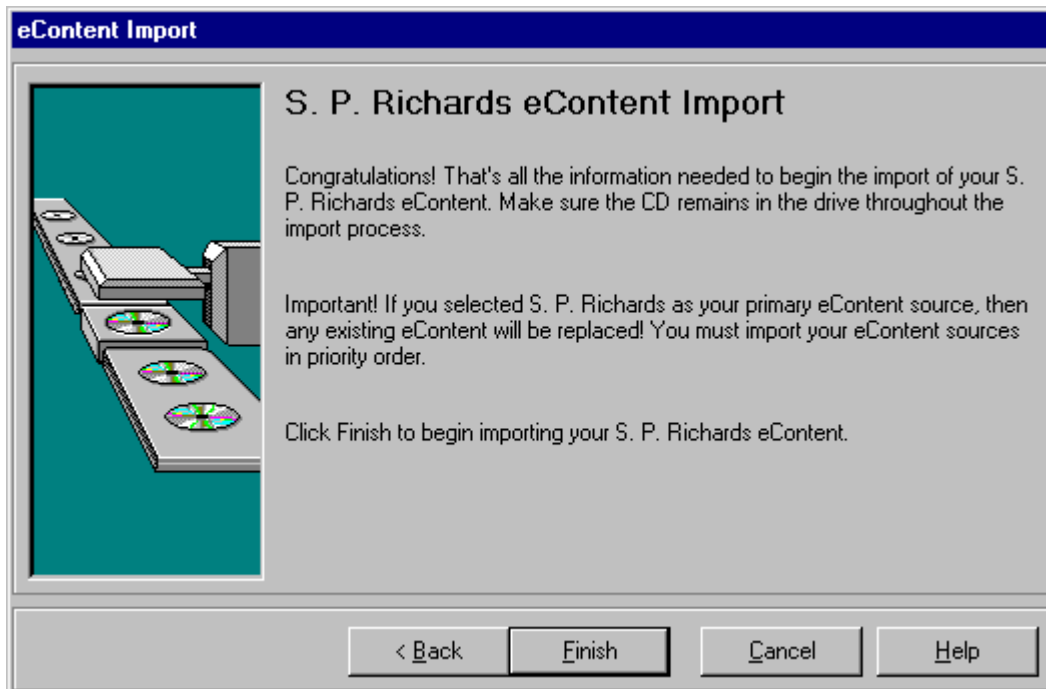
Specify the Location of the S. P. Richards Thumbnail Images:



Use this screen to locate the S. P. Richards thumbnail images. These images are normally found in the \Full Catalog\Complete\Images\Thumbnail folder on the CD.

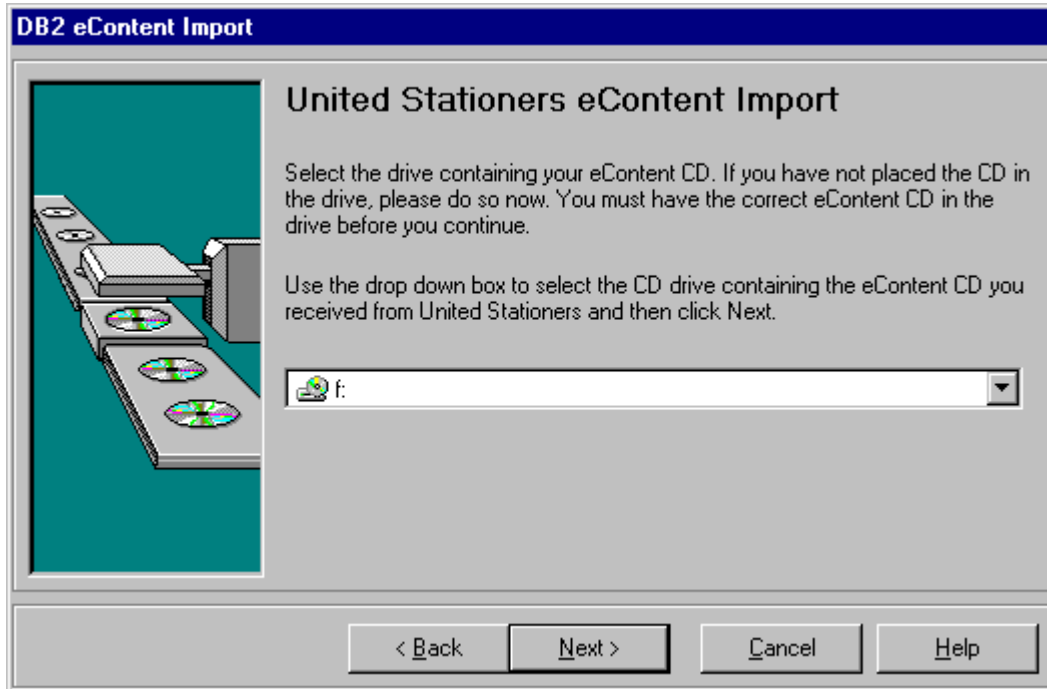
Click Next to continue importing your eContent.

Finishing the S. P. Richards eContent Import:



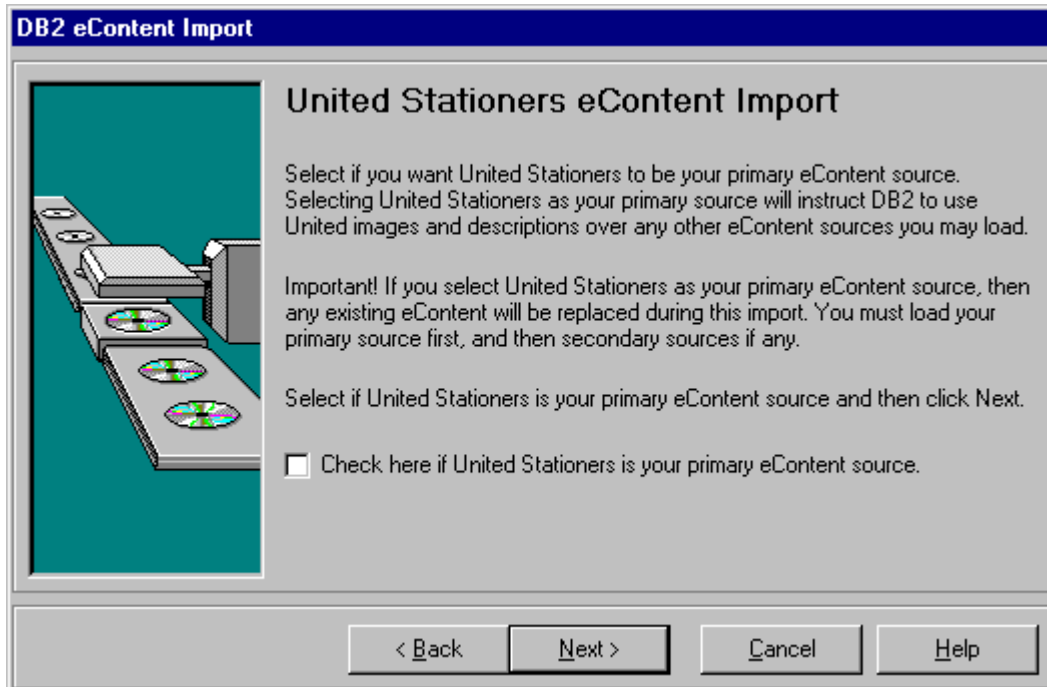
Click Finish to begin importing your S. P. Richards eContent.

Importing United Stationers eContent



Select the CD drive containing the S. P. Richards eContent CD. Click Next to continue.

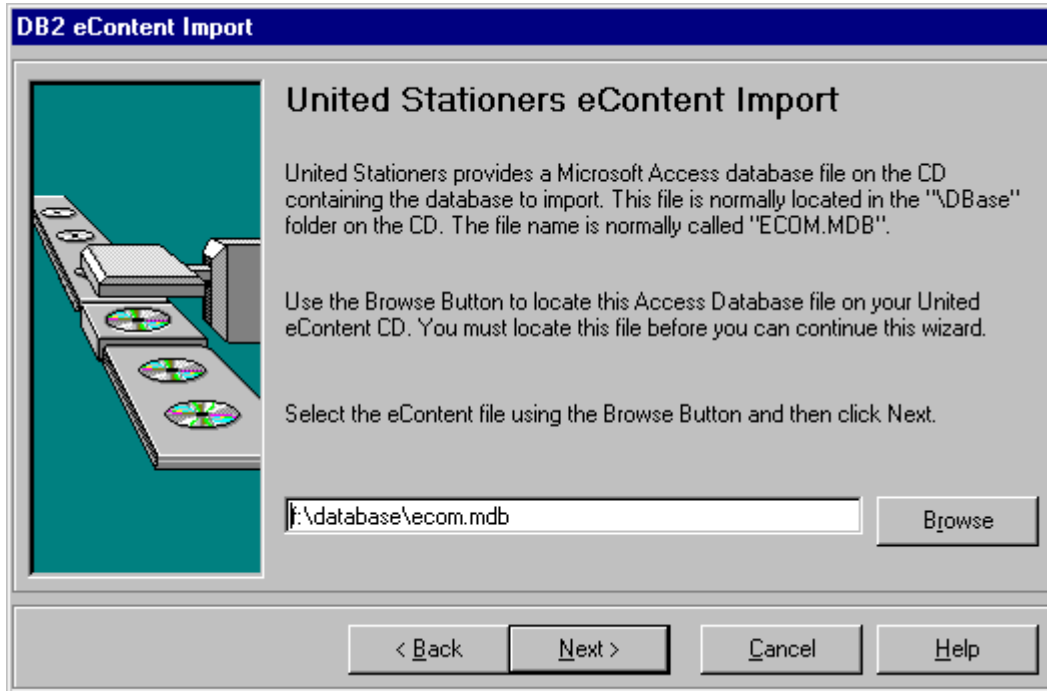
Select Primary Source:



If United is your primary wholesaler, or if you are loading only a single wholesaler, then be sure to check the primary source check box. This instructs DB2 to use this provider's images and text over any other provider you may load later.

Important! If you plan on loading more than one source, then make sure you load your primary source first, then load any secondary sources.

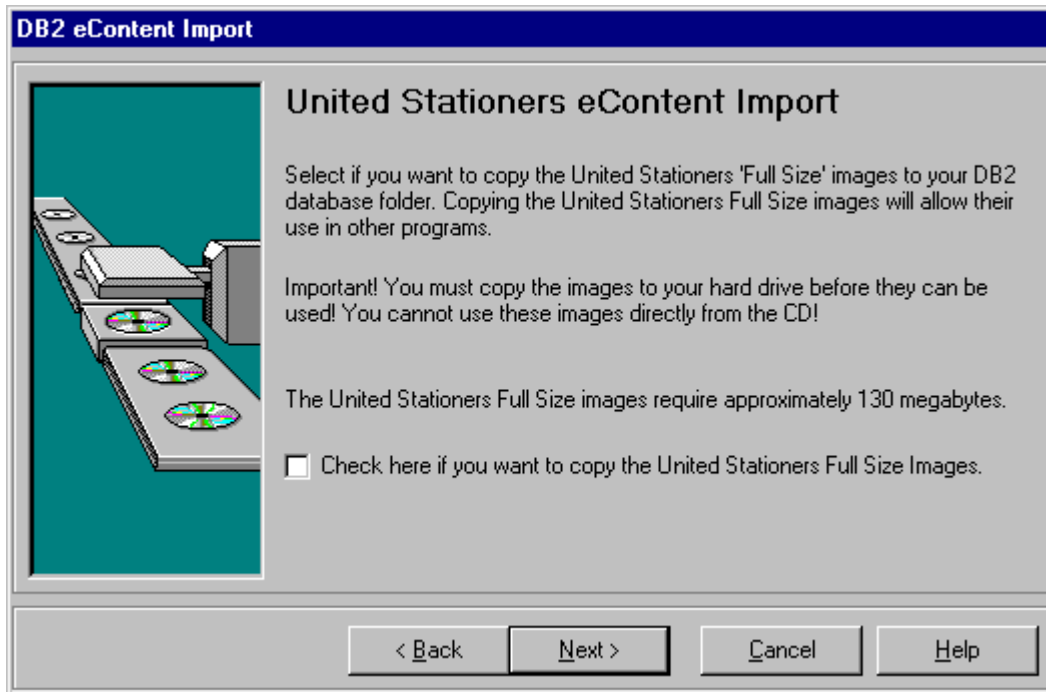
Select United Data File:



Use this screen to select the United data file. This is a database file contained on the CD usually in a folder named: \DBase. The file is normally called ECOM.MDB. You can use the Browse Button to browse the CD locating this file.

Click Next to continue importing United eContent.

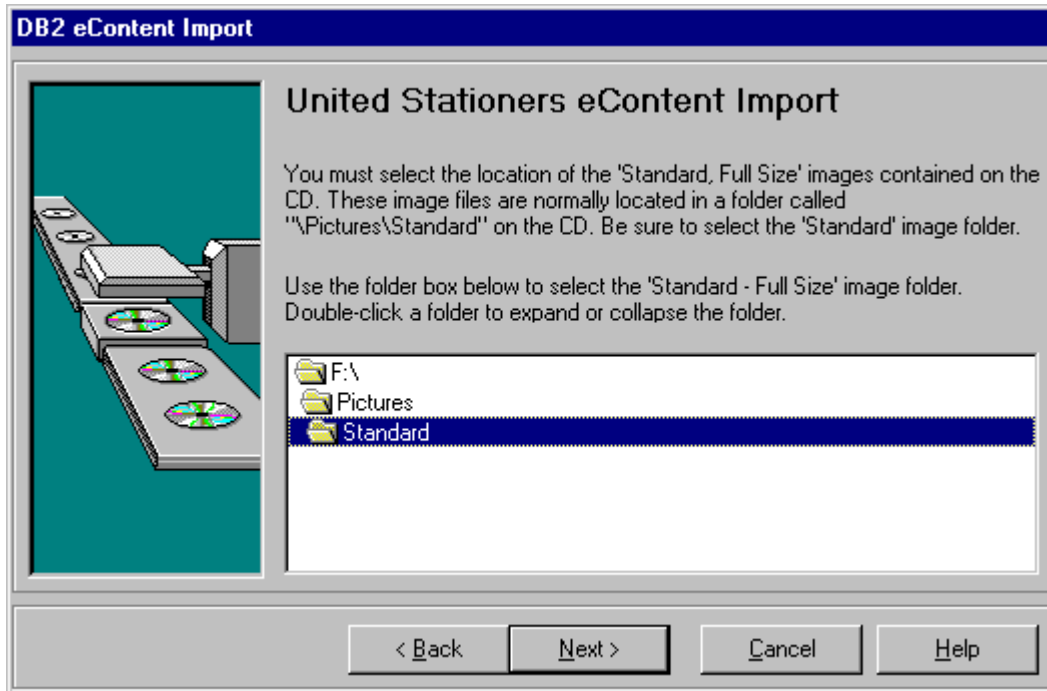
Copy the United Full Size Images:



Select the check box if you want to copy the United full size images to your hard drive. You must copy these images to your hard drive in order to use them. You cannot use these images directly from the CD.

The United full size images require approximately 130 megabytes.

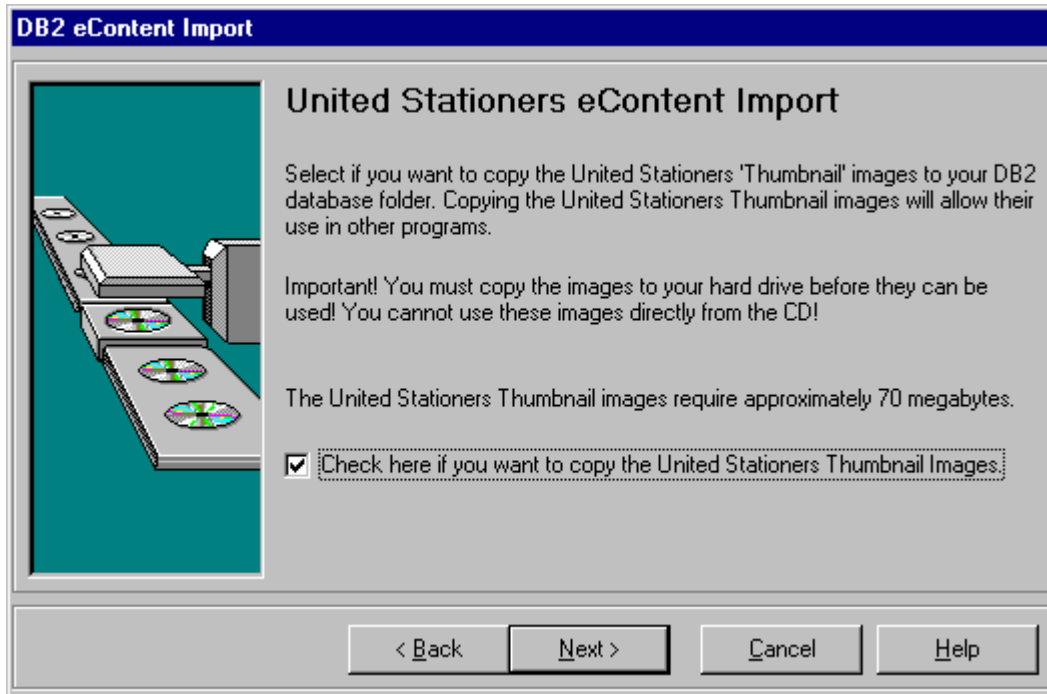
Specify the Location of the United Full Size Images:



Use this screen to locate the United full size images. These images are normally found in the \\Pictures\\Standard folder on the CD.

Click Next to continue importing your eContent.

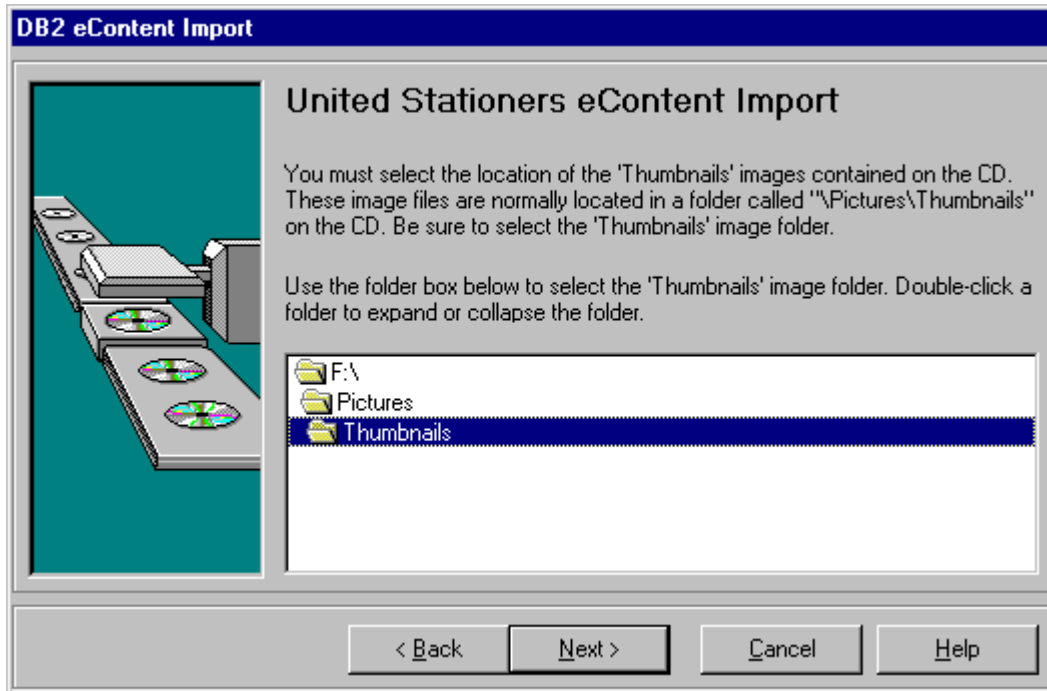
Copy the United Thumbnail Images:



Select the check box if you want to copy the United thumbnail images to your hard drive. You must copy these images to your hard drive in order to use them. You cannot use these images directly from the CD.

The United thumbnail images require approximately 70 megabytes.

Specify the Location of the United Thumbnail Images:



Use this screen to locate the United thumbnail images. These images are normally found in the \Pictures\Thumbnail folder on the CD.

Click Next to continue importing your eContent.

Finishing the United eContent Import:



Click Finish to begin importing your United eContent.

Next Steps

After importing all eContent, you should perform the Inventory database update to merge your eContent into your item database.