

# DB2 Telnet Server Setup Guide



# Table of Contents

Purpose .....	3
Before You Begin .....	3
Setting the Options .....	3
Starting the Server .....	4
Set Program Options Button:.....	4
Login to a Host Button: .....	5
Connect to Host Button: .....	5
Disconnect From Host Button: .....	5
Script Functions Button: .....	6
Add/Edit Script .....	7
Testing your login script.....	8
Log Functions Button: .....	8
Start, Pause, and Stop Buttons:.....	8
Post Orders Button: .....	9

## **Purpose**

This document describes the set up of the DB2 Telnet Server product. You only need to complete these instructions if you have installed the DB2 Telnet Server and are going to be posting orders created in eServ to your backend system.

## **Before You Begin**

Make sure you have read the complete option settings for this product before attempting to follow these instructions. References to options detailed in this document are contained throughout this reference. The DB2 Telnet Server is an authorized product and you must contact Jack Duncan at 800-722-3615 extension 1 before you continue.

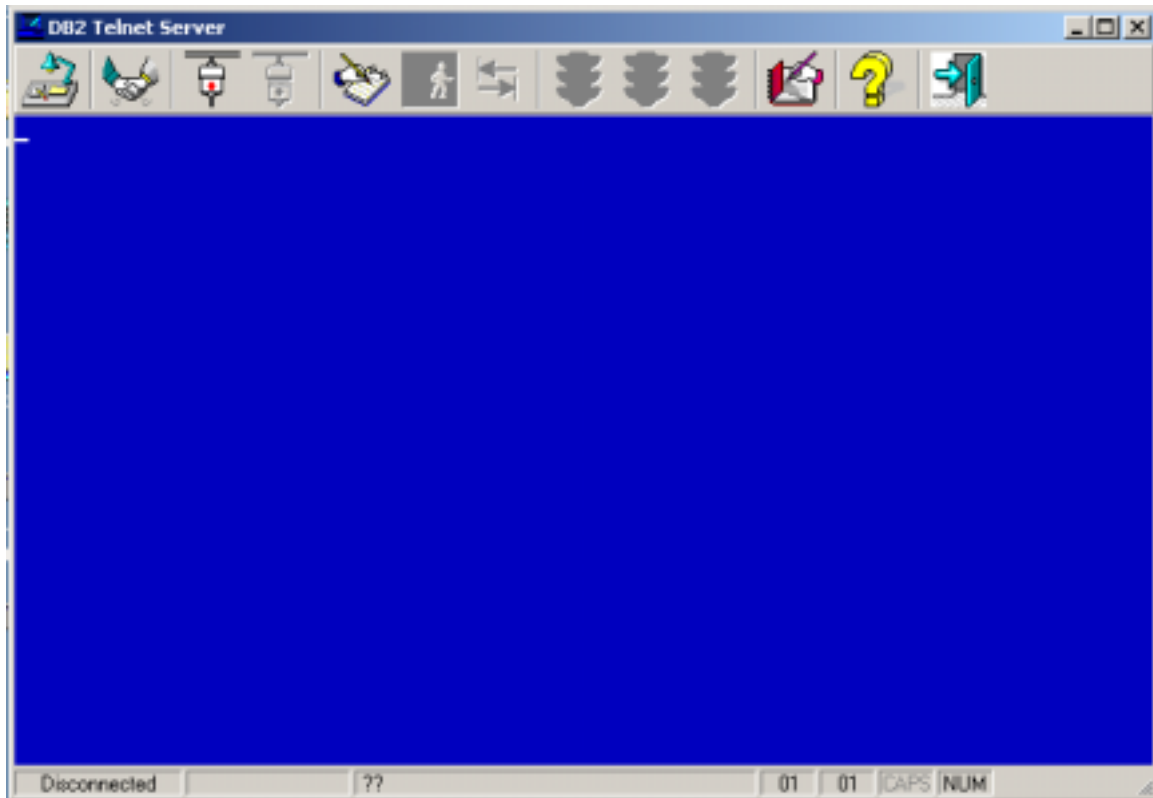
## **Setting the Options**

Make sure you set the email notification options **BEFORE** you attempt to post orders. Initially, you should enable all the email reports and make sure you provide valid email addresses to send the reports to. These reports are required information if you need support with order posting problems.

You also need to make specific settings in the eServ Order Posting options. These settings include the order taker to use, the order taker password, order entry program password, and credit limit overrides.

## Starting the Server

From the DB2 main server menu, choose Telnet Server. The Telnet Server terminal screen is displayed:



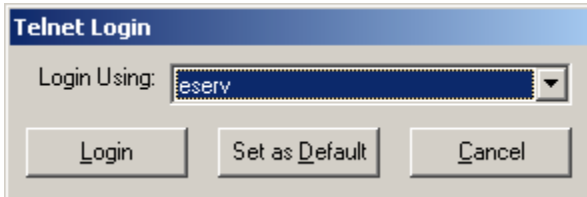
The button row located at the top of this screen contains the manual setup and operations you can perform in the Telnet Server. Each button function is listed in order.

### ***Set Program Options Button:***

Click this button to link to the User Member Maintenance program. All Telnet Server options are set in User Member Maintenance. With little exception, you must set the Company options, instead of a specific user, before the Telnet Server will recognize any changes. This limitation may be changed in the future, but until otherwise instructed, you must set the Telnet Server options under the Company Defaults.

### ***Login to a Host Button:***

This button logs you into a Telnet host. When you click this button the Telnet Login screen is shown:



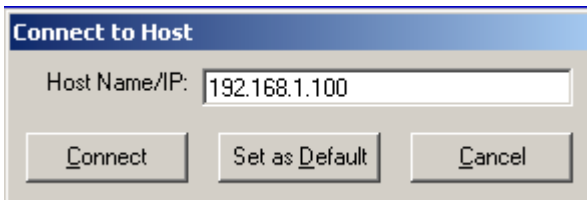
You must have previously created a login script before you can use this function. See the Script Functions Button for information on creating a login script.

Use the drop down list to select the login script you want to use if you have created more than one login script.

Click the Login Button on this screen to login immediately using the selected script. Click the Set as Default Button to login immediately using the selected script, and set it as the default to display the next time you choose the Login to a Host Button.

### ***Connect to Host Button:***

Click this button to connect to a Telnet host. This differs from the Login Button in that it only connects and will not automatically log you in. When you click this button, the Connect to Host Screen is displayed:



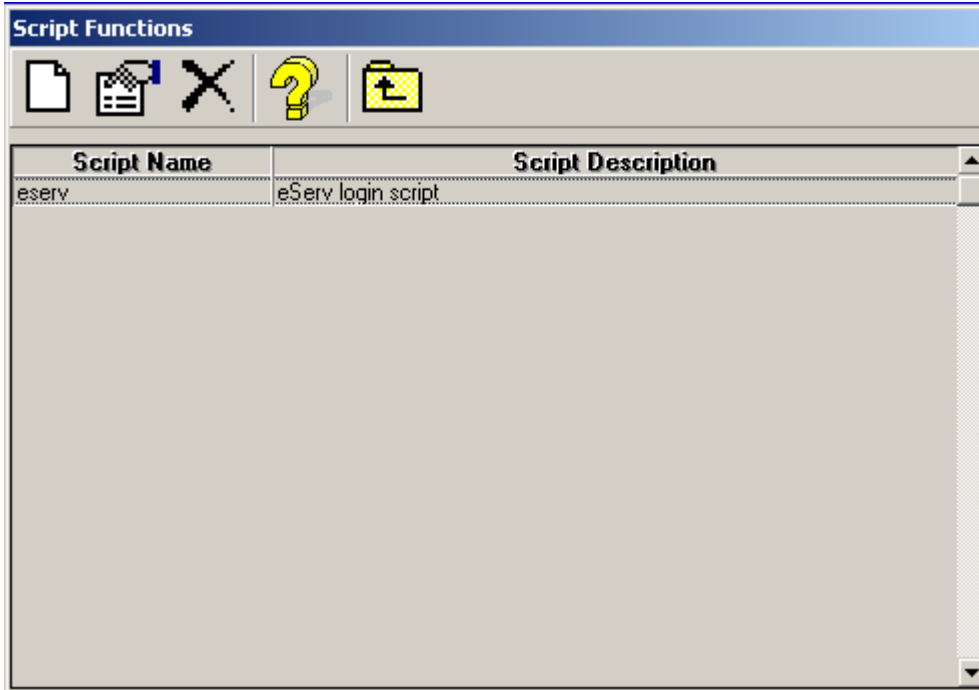
You can enter the IP address, or host name, of the Telnet Server you want to connect to. Once the host or IP address is entered, click the Connect Button to connect immediately, or the Set as Default Button to connect immediately and remember this host name/IP address the next time you connect.

### ***Disconnect From Host Button:***

This button is only active when you are connected. It immediately terminates the Telnet connection and clears the terminal screen. You cannot re-connect and resume exactly where you left off if you disconnect.

## **Script Functions Button:**

This button allows you to create login scripts that eServ will use to login to your backend system to post orders. The login script function is used to both connect to your backend system, and then to login using the parameters you specify. When you click this button, the Script Functions Screen is shown:



All the scripts you have created will appear on this screen. For now, we are only going to cover the basic creation of a login script called 'eserv' which will allow the order poster to process orders through your backend system.

Click the 'Blank Page' button to create a new script. The Add/Edit Script Screen is shown.

## Add/Edit Script

The screenshot shows a dialog box titled "Add/Edit Script". It contains the following fields and values:

- Script Name: eserv
- Description: eServ login script
- Script Type: Login Script
- Host Name: 192.168.1.100
- Login Timeout (MS): 5000
- Login Pause (sec): 5
- Public:
- Function Key Shortcut: None
- Prompt: (blank)
- Screen Key: Account Name:
- Script Text: LOGINNAME^M  
LOGINPASSWORD^M
- Char Pause (MS): 0

When you create a new script, your entries will be blank. The screen above shows sample settings of what you should use to create a script that logs in to the Ataman Telnet host. To set up the DB2 Telnet Server to login to Ataman, set the following fields:

**Script Name:** enter 'eServ' as shown in the sample screen.

**Description:** enter "eServ Login Script"

**Script Type:** make sure this is set to "Login Script".

**Host Name:** enter the IP address of your backend system.

**Login Timeout:** Leave this at 5000 milliseconds.

**Login Pause:** Make sure this is set to at least 5 seconds.

**Public:** Should not be checked.

**Function Key Shortcut:** Should be none.

**Prompt:** Should be left blank.

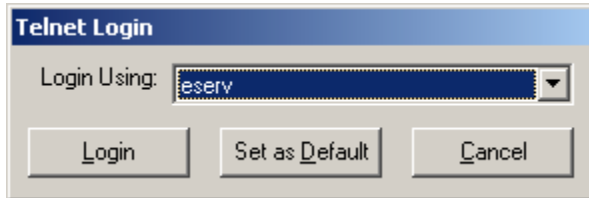
**Screen Key:** Should contain the exact phrase "Account Name:"

**Script Text:** Should contain the login name you use to login, followed by ^M and your login password also followed by ^M.

For clarity, you can enter your login name, the ^M, and then press enter to go to the next line. Then enter your password also followed by ^M. This is now the example screen is shown. Also note, that the Screen Key 'looks for' the prompt that Ataman presents when you connect. If you are using a different Telnet host, you may need to change this Screen Key. Be sure to click the Checkmark Button to save your settings!

## Testing your login script

From the DB2 Telnet Server main screen, click on the Login to a Host Button (the hand shake) and the Telnet Login screen will appear:



Use the drop down box to select the eServ login script you created, and then click the Set as Default Button. This will save eServ as your default login, and attempt to log you in. You should see the login take place on the screen, and your main program menu will be shown if your login script is correct.

## ***Log Functions Button:***

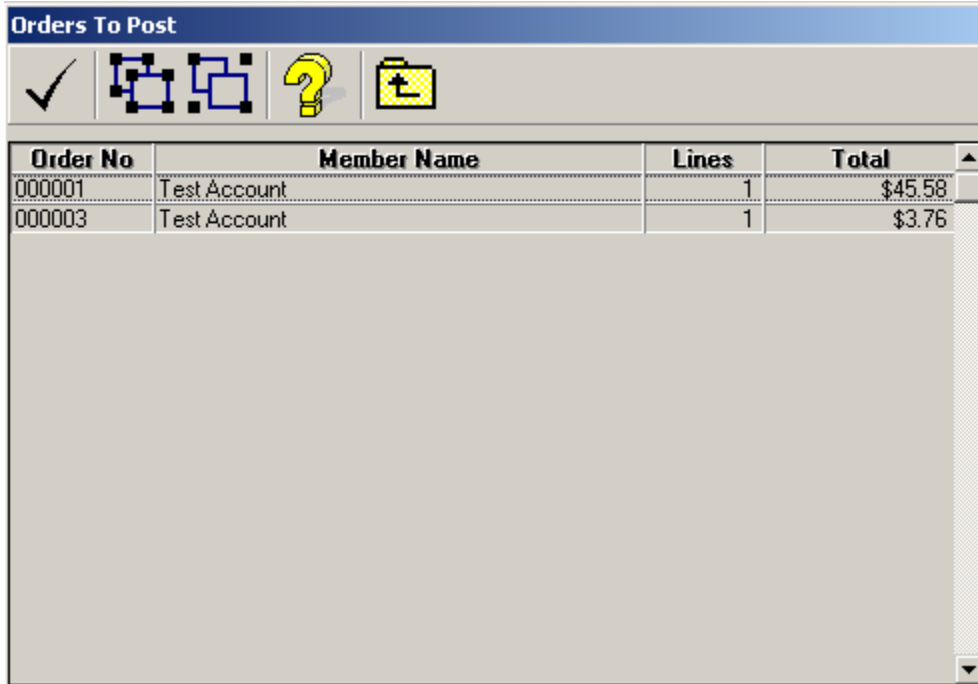
This button is not currently active.

## ***Start, Pause, and Stop Buttons:***

These buttons are more advanced functions that are currently un-documented.

## Post Orders Button:

Clicking this button begins the manual order posting process. Any orders that have been submitted through eServ, and not yet posted will appear on the Orders to Post Screen:



Order No	Member Name	Lines	Total
000001	Test Account	1	\$45.58
000003	Test Account	1	\$3.76

Select the orders you want to post, by clicking on them with the mouse, and then click the checkmark button. You can also click the group button to select all orders, or the un-group button to clear all selections. To select multiple orders individually, hold down the control key while clicking on the orders you want to select.

Once you click the checkmark button, the orders will start posting. You will be able to see and watch the orders being posted to your order entry program. Do not interfere with the automatic posting, even if it appears to be 'stuck'. Time outs have been set and the program will automatically back itself out to the main menu if something goes wrong.