

# DB2 Data Dictionary Guide



# Table of Contents

Purpose .....	3
Before You Begin .....	3
Starting the Data Dictionary Processor .....	3
Starting From the Server Menu:.....	3
Starting From Windows:.....	3
Starting From the Scheduler: .....	3
Data Dictionary Processor Interface .....	4
Data Dictionary Main Interface Screen: .....	4
Full Update Option .....	4
Partial Update Option .....	4
Send to OPSsoftware.....	4
Next Button.....	4
Close Button .....	5
Help Button.....	5
State Button.....	5
Next Steps .....	5

## Purpose

This document describes the special Data Dictionary processor responsible for checking the formats and structure of your DDMS files. You only need to review these instructions if you have installed the DB2 product.

## Before You Begin

Make sure you have completed the setup and installation of DB2 before continuing. These instructions require DB2 to be installed and either authorized or operating in evaluation mode. You cannot complete these instructions until you complete the setup and authorization of DB2.

## Starting the Data Dictionary Processor

There are three ways to start the data dictionary processor:

### ***Starting From the Server Menu:***

You can start the data dictionary processor from the server menu contained in the DB2 monitor. By now, you should know how to display the server menu by right clicking on the DB2 monitor icon in your system tray.

### ***Starting From Windows:***

You can also start the data dictionary processor through the Windows menu system. Choose Start – Programs – OPSoftware – DB2 Data Dictionary.

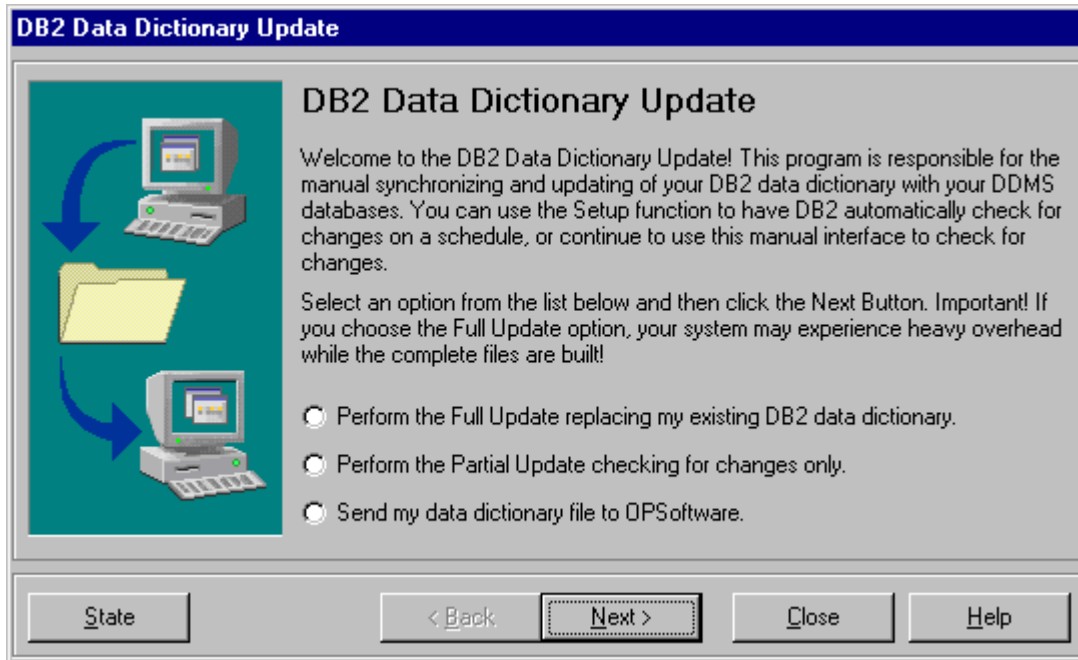
### ***Starting From the Scheduler:***

You can also start the data dictionary processor automatically using the scheduler. See the DB2 Scheduler Guide for information about starting the data dictionary processor automatically on a schedule.

## Data Dictionary Processor Interface

All of the database processors use a similar interface. Each processor provides the same functions to the DB2 kernel and the similar interface. Rather than show every processor, the examples here will use the System/Sales Rep processor interface. Remember that each processor, with the exceptions of Data Dictionary and eContent Import with their own documentation, provides the same functions.

### **Data Dictionary Main Interface Screen:**



### **Full Update Option**

Click the Full Update option to replace your current DB2 data dictionary database with a 'full' update from your DDMS files. This option requires exclusive access to your DB2 database.

### **Partial Update Option**

Click the Partial Update option to check your DDMS files for any changes. This option compares your DB2 data dictionary to your DDMS files and will only update if changes to your DDMS files have occurred since the last update.

### **Send to OPSsoftware**

Click this option to send your data dictionary file to OPSsoftware. This sends only information regarding the structure of your DDMS files, not the data itself.

### **Next Button**

Click this button to start the update. You must select one of the three update options before clicking this button.

## Close Button

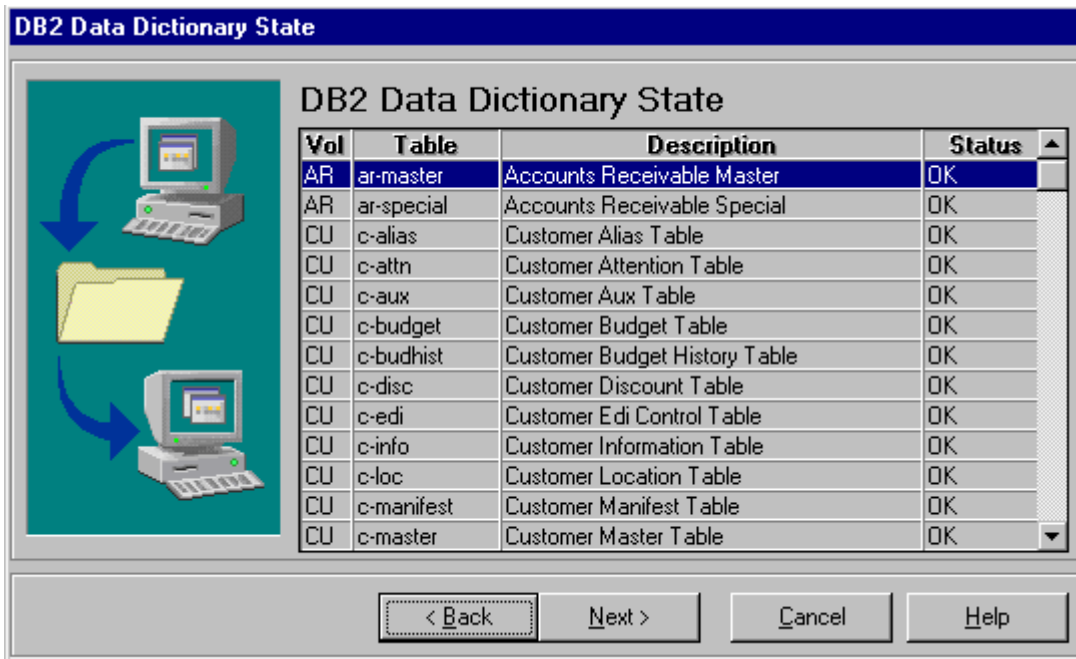
Click this button to close the processor without performing any further actions.

## Help Button

Click this button to display help.

## State Button

Click this button to display the current state of your data dictionary. This information shows what DDMS files are included and the current status of these files:



Vol	Table	Description	Status
AR	ar-master	Accounts Receivable Master	OK
AR	ar-special	Accounts Receivable Special	OK
CU	c-alias	Customer Alias Table	OK
CU	c-attn	Customer Attention Table	OK
CU	c-aux	Customer Aux Table	OK
CU	c-budget	Customer Budget Table	OK
CU	c-budhist	Customer Budget History Table	OK
CU	c-disc	Customer Discount Table	OK
CU	c-edl	Customer Edi Control Table	OK
CU	c-info	Customer Information Table	OK
CU	c-loc	Customer Location Table	OK
CU	c-manifest	Customer Manifest Table	OK
CU	c-master	Customer Master Table	OK

The columns in this display show the Volume ID, the DDMS table name, a description of the table, and the current status. OK indicates that this DDMS table conforms to the current release data dictionary. A status of Different indicates that the DDMS table does not conform to the latest data dictionary. You should contact OPSsoftware for assistance in correcting this situation before you attempt to use DB2.

## Next Steps

Review the DB2 Scheduler Guide for instructions on how to set automated processes to keep your DB2 databases continuously up-to-date with your DDMS files.

Review the specialized data processor guides: DB2 Data Dictionary Guide and DB2 eContent Import Guide.

Review the DB2 Server Update Guide to keep your DB2 server programs up-to-date.