

DBx Setup Instructions

Before you begin

You will need network access to your DDMS computer and the DDMS files. This is usually accomplished through a mapped network drive, but UNC paths (\\NewServer\DDMS\SR) are also acceptable.

OPSoftware Account Information

You will need your OPSoftware account number and password to complete the setup process. If you do not have this information, please email <mailto:sales@opsoftware.com>.

DDMS Knowledge

You will be required to specify the locations of certain files on your DDMS computer. The locations of these files can be found in your LO parameters screen. You will need to know the folder locations (SR, IN, etc) for all your DDMS files before you can complete the DBx Setup.

Item file update

If you plan on using the Item File Update, you need to install the VFP OLE driver. Please see the separate VFP OLE Driver Setup Instructions for the steps to install this driver.

Office 2007 Support

If you plan on using Contracts 1-2-3 to import Office 2007 formatted Excel files, then you need to install the Access Database Engine drivers for Office 2007. Please see the separate Office 2007 Driver Setup Instructions for the steps to install this driver.

Quick Start

Step 1: Download the Setup Program

Download and run the setup package: http://www.opsoftware.com/setup/DBx_Setup.exe

See “Download the Setup Program” topic for details on this step

Step 2: Run the DBx Installer

Run the DBx Installer you just downloaded (it should start automatically).

See “Run the Downloaded File” topic for details on this step.

Step 3: Start the DBx Server Installation Program

Choose Start – All Programs – OPSoftware – DBx Server Installation to start the program. Follow the prompts, but be sure to choose “OPSoftware Download – Beta Release” as the installation option.

See the “DBx Server Installation” topic for details on this step.

Step 4: Set Your Options

If this is the first time you have installed DBx or DB2 on this computer, you will need to set your options.

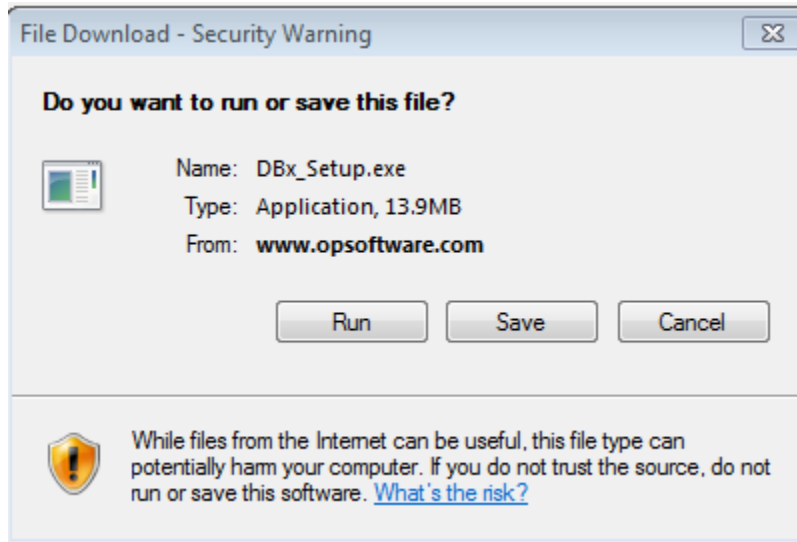
See the “Server Setup” topic for details on this step

Download the Setup Program

A new setup program is available to install DBx from the Internet as well as physical media such as CD's. You should use this new setup method instead of attempting to download DBx from an existing DB2 installation.

Download the Setup Package

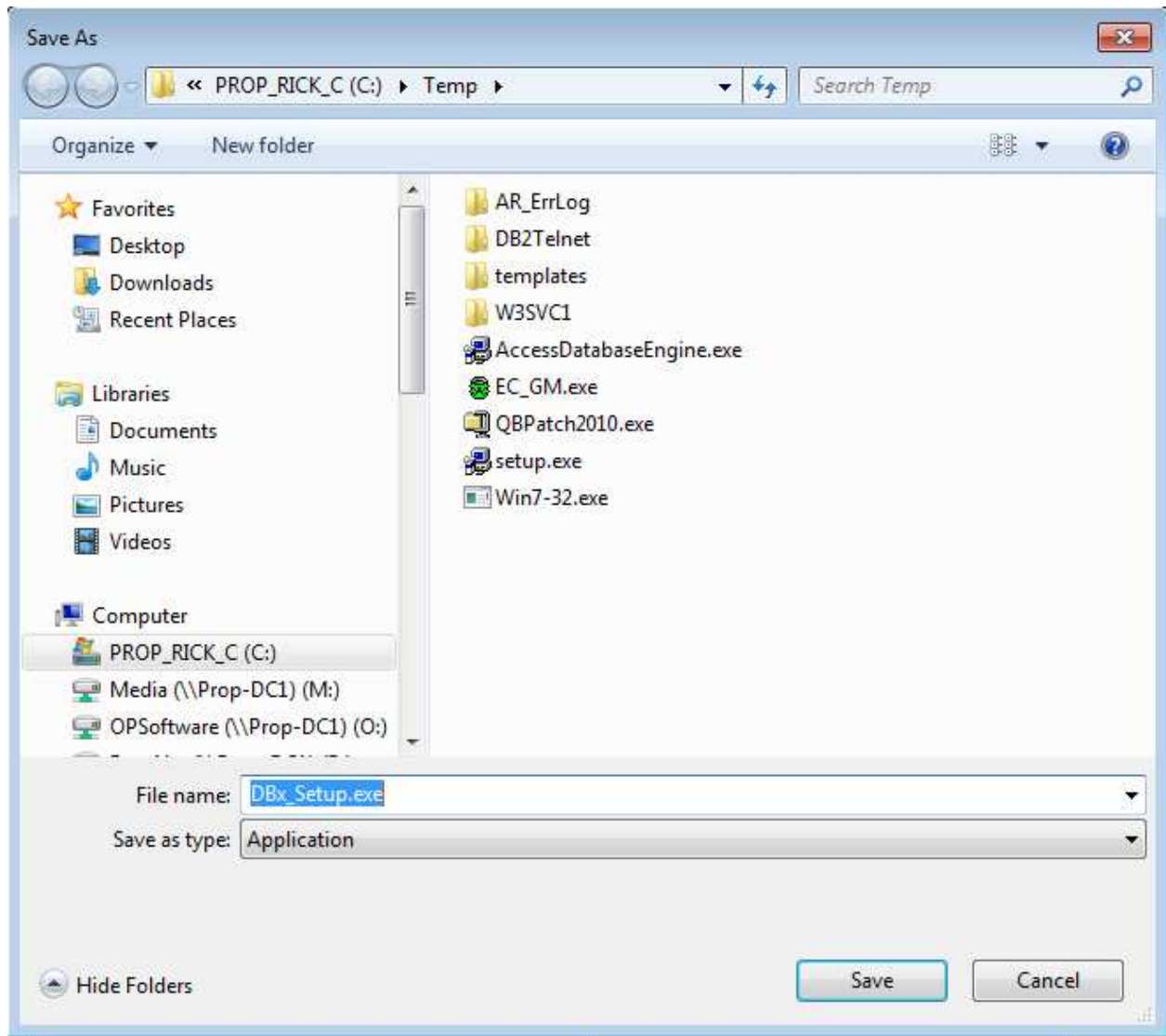
The DBx Setup package is located at: http://www.opsoftware.com/setup/DBx_Setup.exe



Click the link and choose the 'Save' option to save the setup to a location on your hard drive you can remember and return to later.

Save the Setup Package

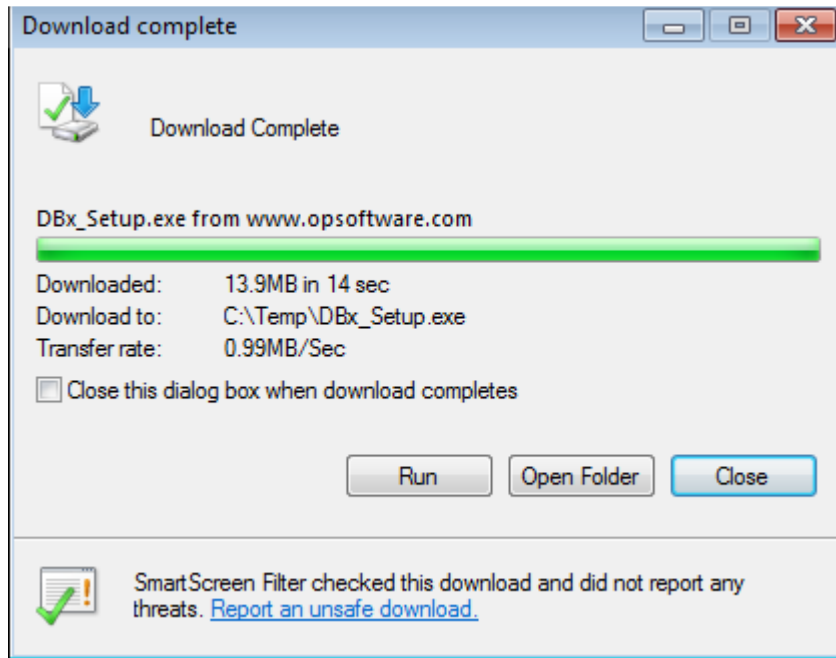
Pick a location you can remember and save the file.



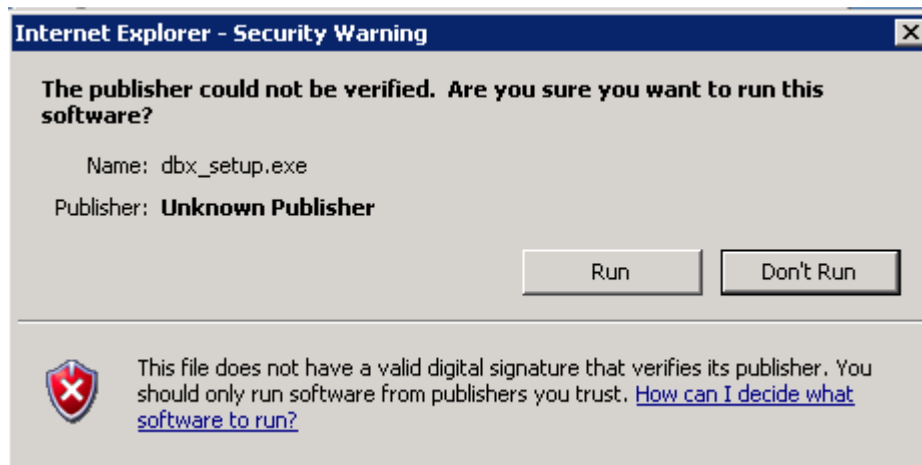
This is a large file and may take a couple of minutes to download.

Run the Downloaded File

When the download completes, choose the 'Run' option if available on your operating system or open the folder where you saved the file and double-click it.

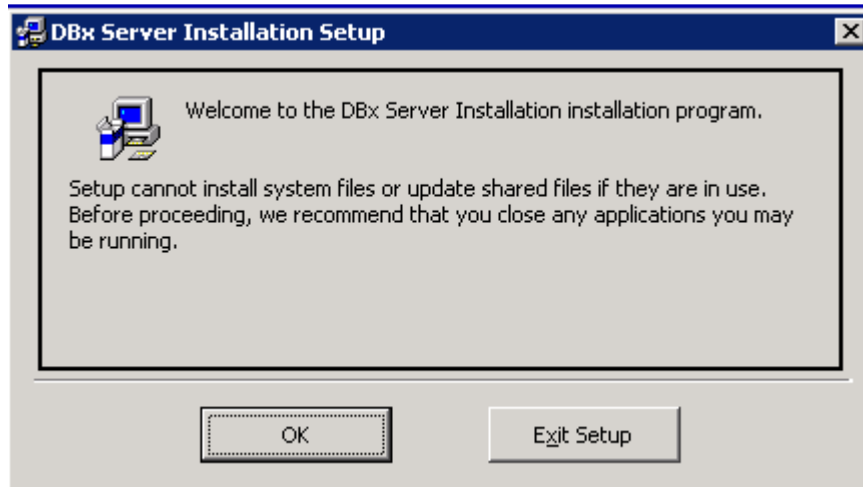


If you receive a security warning, choose the Run Button to continue.



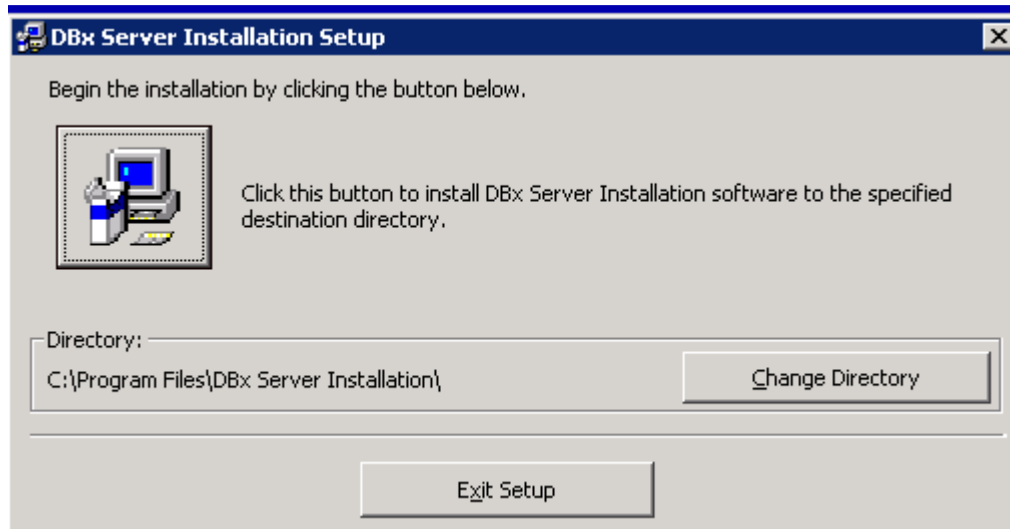
Running the DBx Installer

A DBx Installer box will appear. Choose the OK button to continue. The setup package will be un-zipped and the DBx Server Installation Setup screen will be displayed.



Click the OK button to continue.

Leave the default installation directory and click the Setup Button to continue.

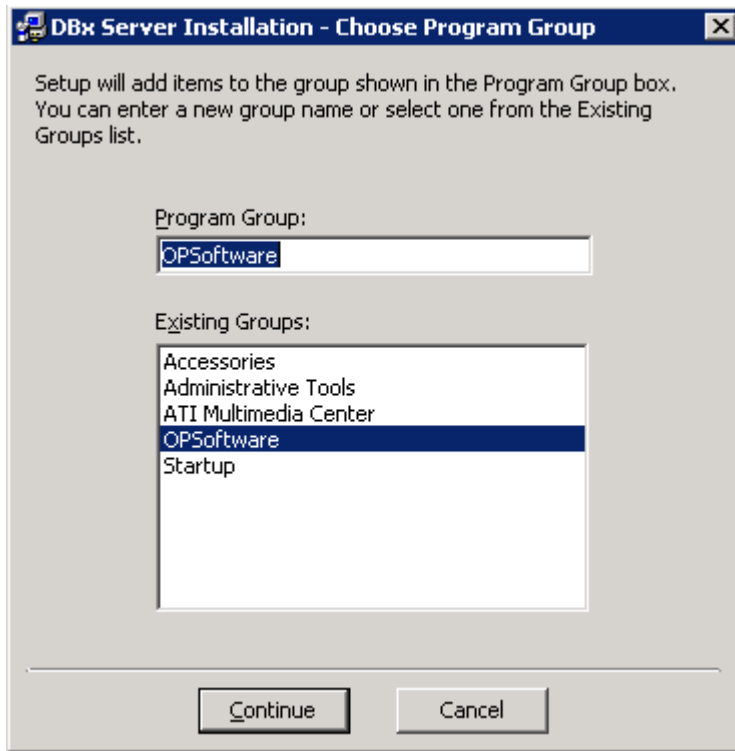


The Setup Button on this form looks like this:

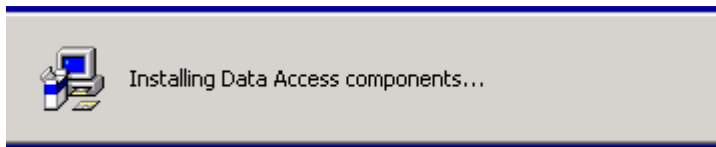


Setup Options

Accept the default program group and click the Continue Button.

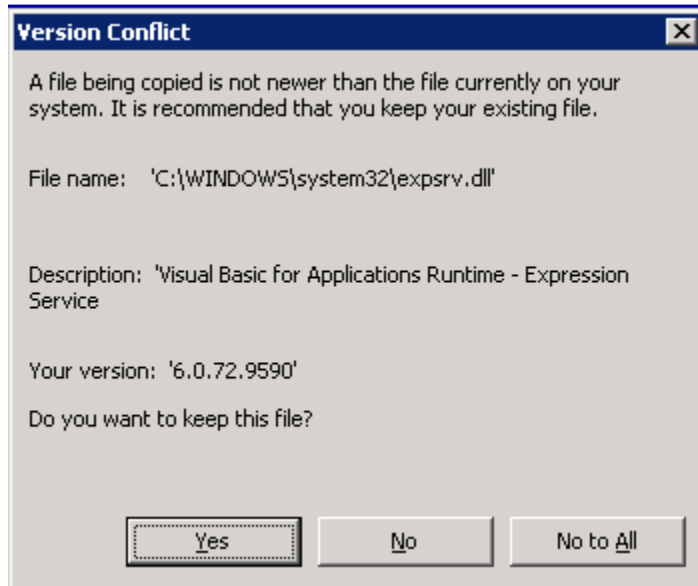


Several actions will take place including the installation of the Data Access components:



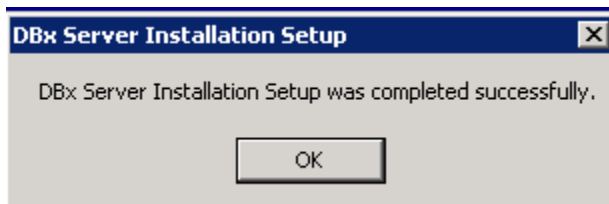
Version Conflict

Sometimes files on your computer are of a later release than those used by DBx. This is especially true for some of the older programs in DB2. If you receive one of these Version Conflict messages, ALWAYS choose 'YES' to keep this file. This keeps your newer file instead of replacing it with an older version.



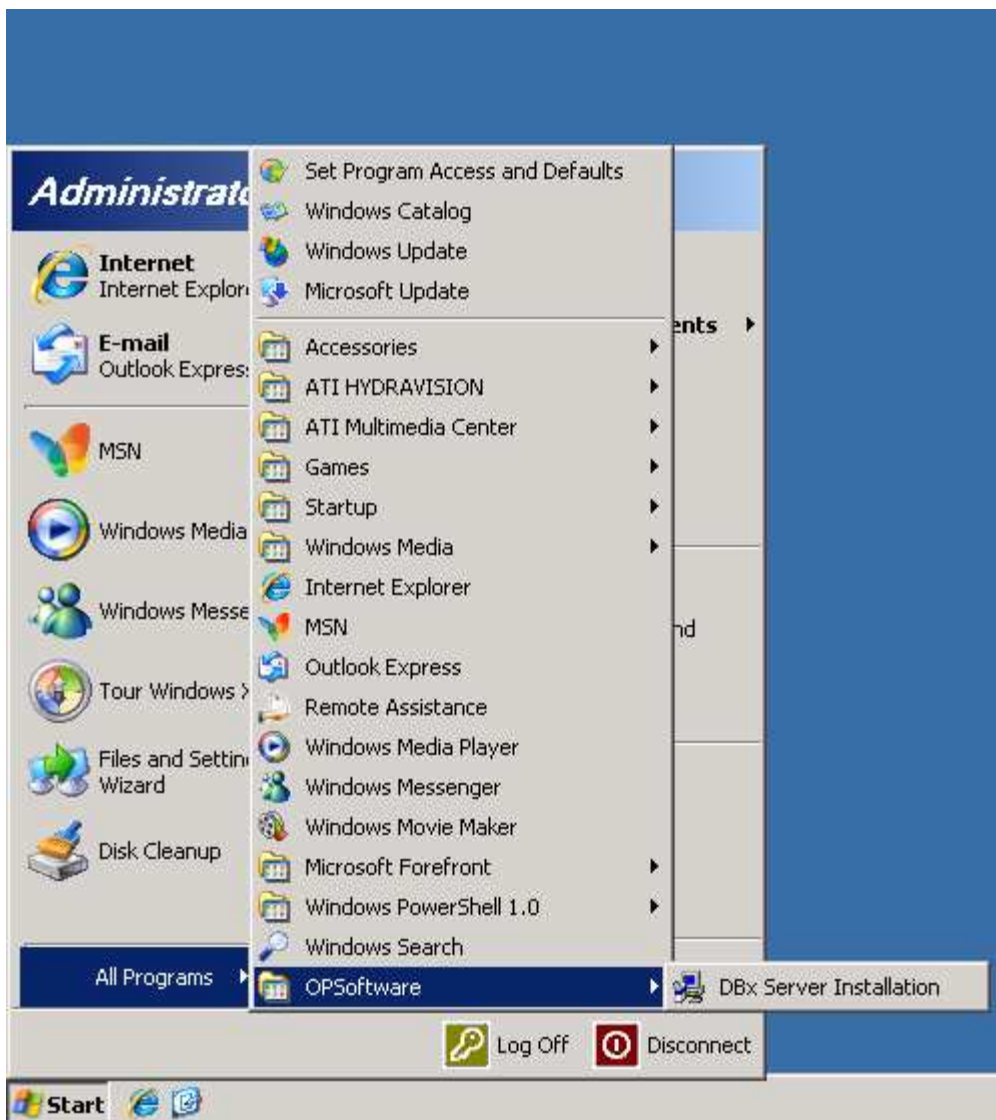
Completing Setup

When Setup completes, you will receive this message. Click OK to continue.



Start the DBx Server Installation program

Click the Windows Start Icon/Button and choose All Programs, OPSOFTWARE and then DBx Server Installation.



DBx Server Installation

Click the Next Button to continue.



License Agreement

You must accept the license agreement. Click Next to continue.



Installation Option

Although there are several installation options, currently you need to select:

OPSoftware Download – Beta Release

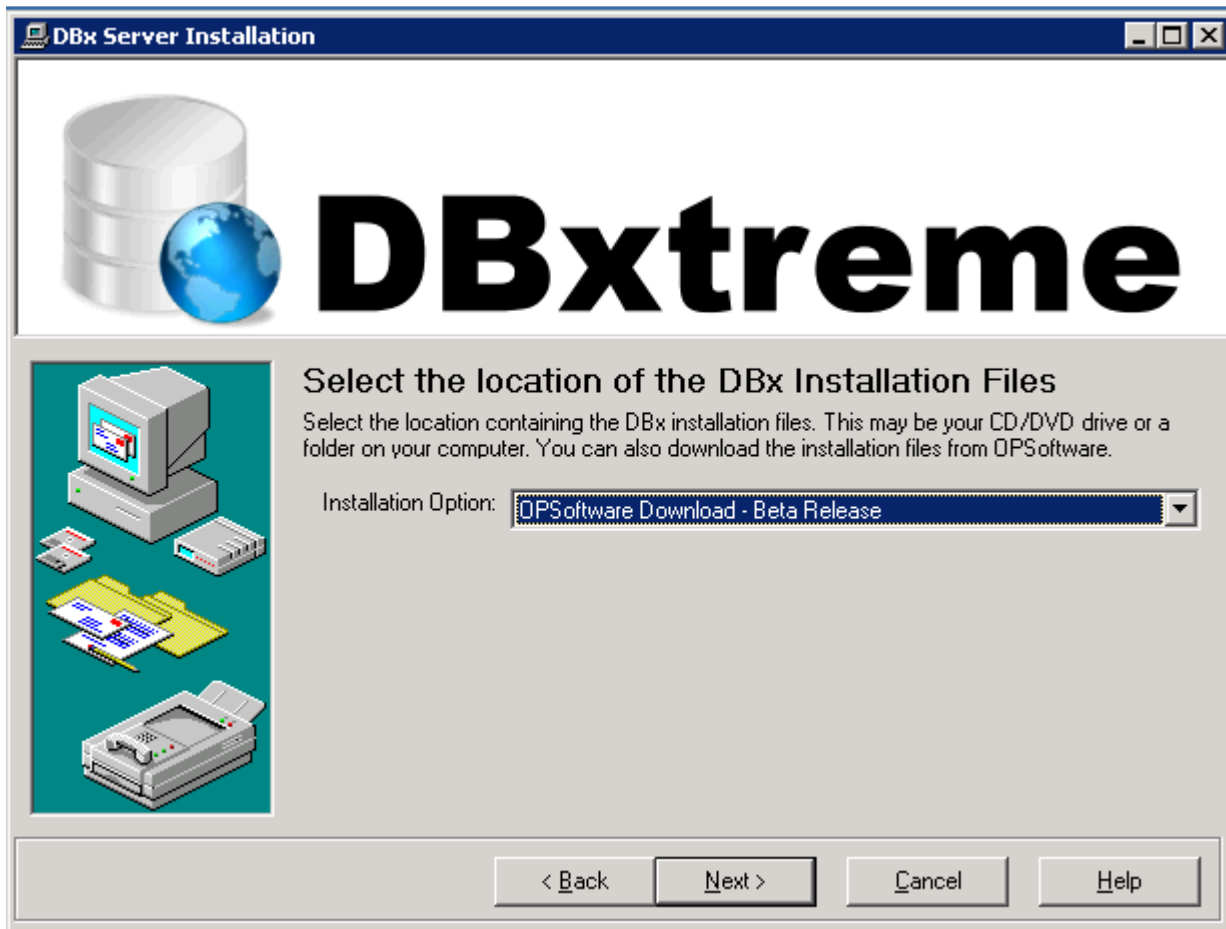
Make sure you select this option and this option only!

Click the Next Button to continue.



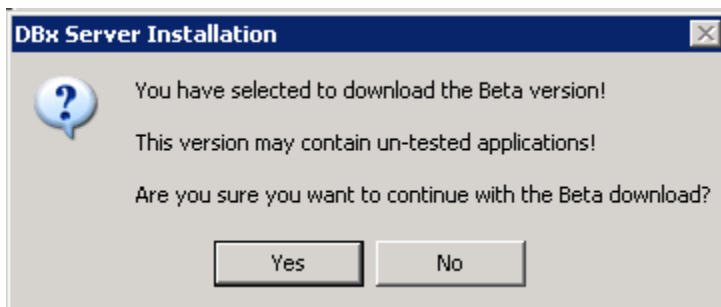
Verify Installation Option

Please double-check that the installation option you have chosen is OPSoftware Download – Beta Release.



Beta Release Warning

You will receive a warning when you select the Beta option. Click the Yes Button to continue



Select Local Hard Drive

Select the local hard drive to install DBx. This must be a local hard drive and not a mapped network drive. DBx always installs in a folder called DB2 on the selected drive.



Start the installation

Click the Next Button to continue the installation.



Downloading files

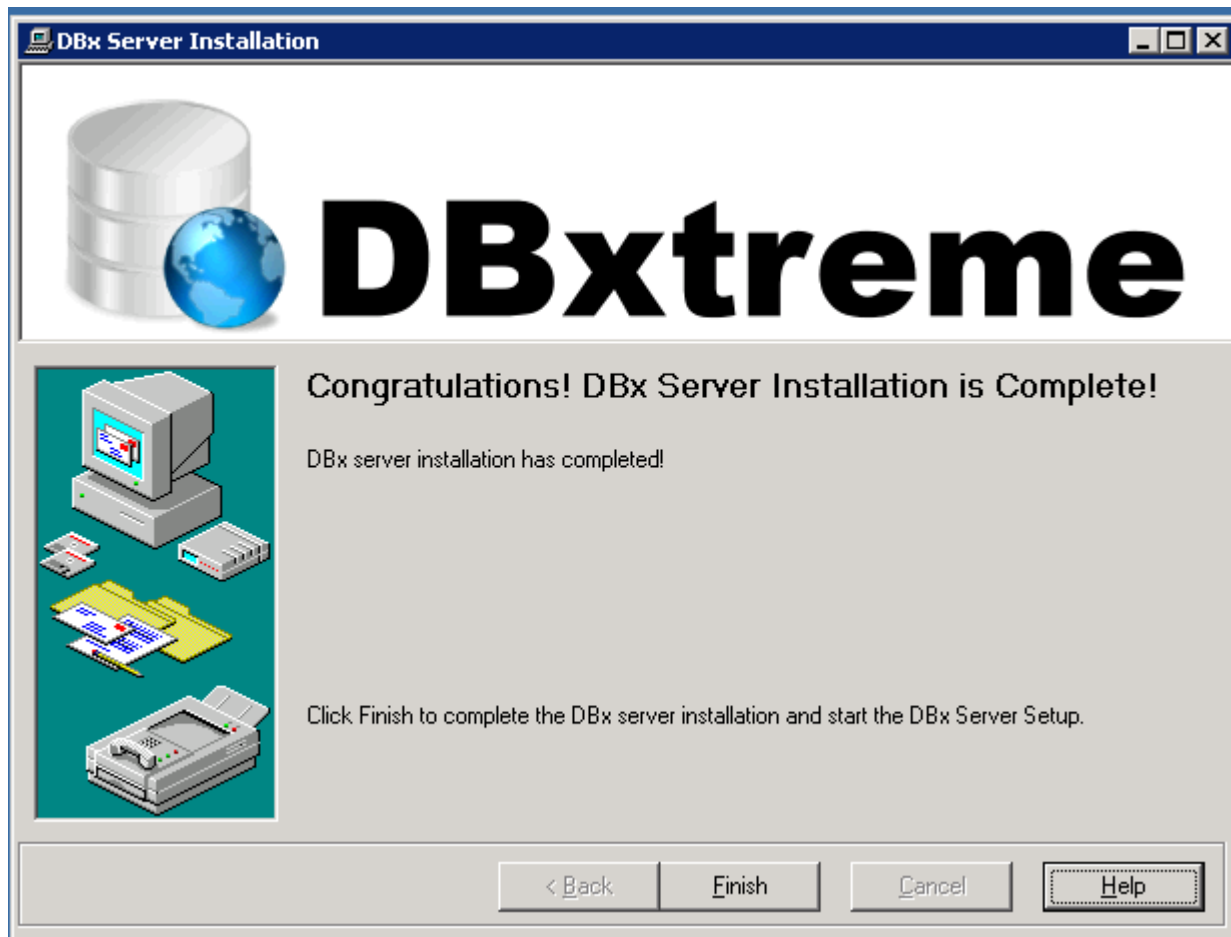
The DBx Setup program will begin the downloading and installation of files from OPSoftware.

This process can take several minutes or over an hour (depending on your Internet speed) to download all the necessary files to run DBx on your computer.



Installation Complete

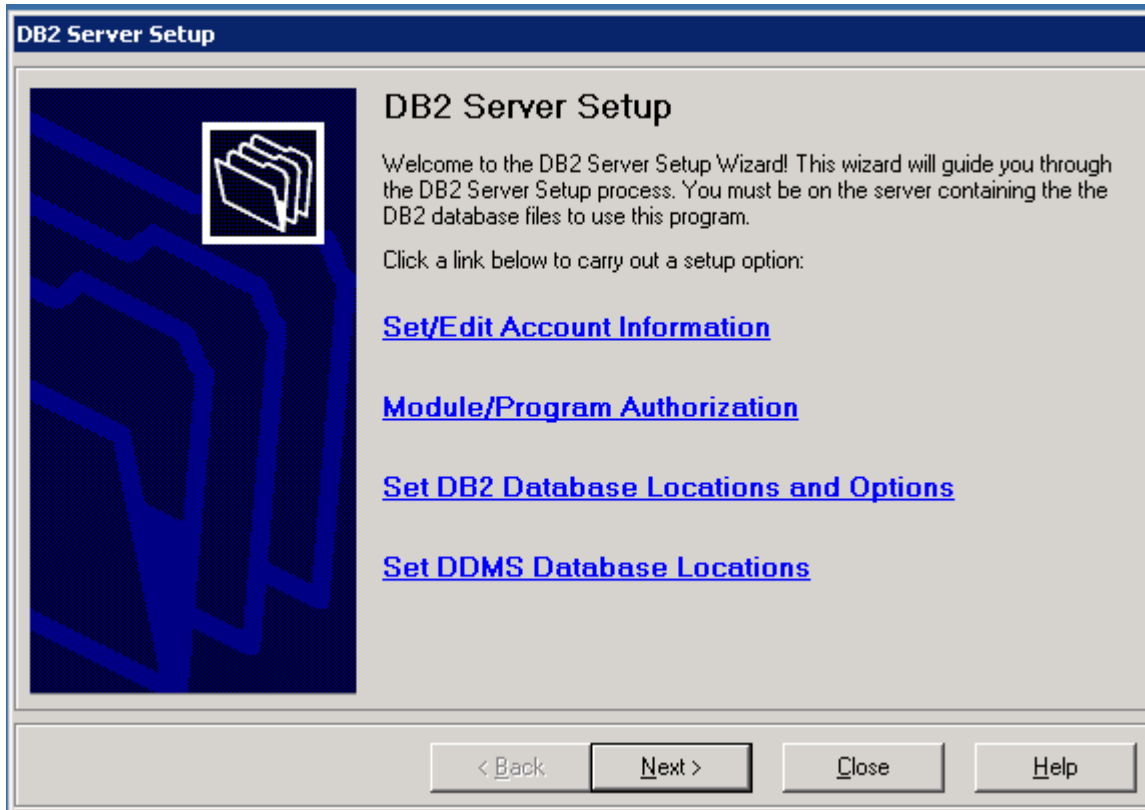
When the installation completes, click the Finish Button to set up DBx.



Server Setup

When the installation completes, you will need to set your OPSw@re account information and your DDMS locations.

Click the Set/Edit Account Information link to start the setup



Account Setup

You must provide your correct OPSoftware Account ID and Password before you can use DBx. If you do not have this information, please send an email to sales@opsoftware.com

Enter your account and password. Enter the password in lower case, then click Next to continue.

Your account credentials will be verified when you click Next.



DB2 Account Setup

Please verify the account and connection information below. If you need an account ID and password or help with the connection information, then please contact Rick Marlette at 770-633-3232. Do not leave this screen until you receive your account ID and password!

Server Name/IP:

Account ID:

Password:

Connection Timeout:

Command Timeout:

Network Library:

< Back Next > Cancel Help

Module/Program Authorization

Click the Module/Program Authorization link from the main DB2 Server Setup.

You must click the Internet Authorization Button to authorize your account.

Internet authorization only takes a couple of minutes. When it completes, click the BACK Button.

DB2 Module Authorization



DB2 Authorization

This section of setup authorizes your DB2 options. You must contact Rick Marlette at 770-633-3232 while these screens are displayed to receive an authorization code.

You can return to this setup at any time and enable these options. Please remember that you must have these screens displayed before you call for an authorization code.

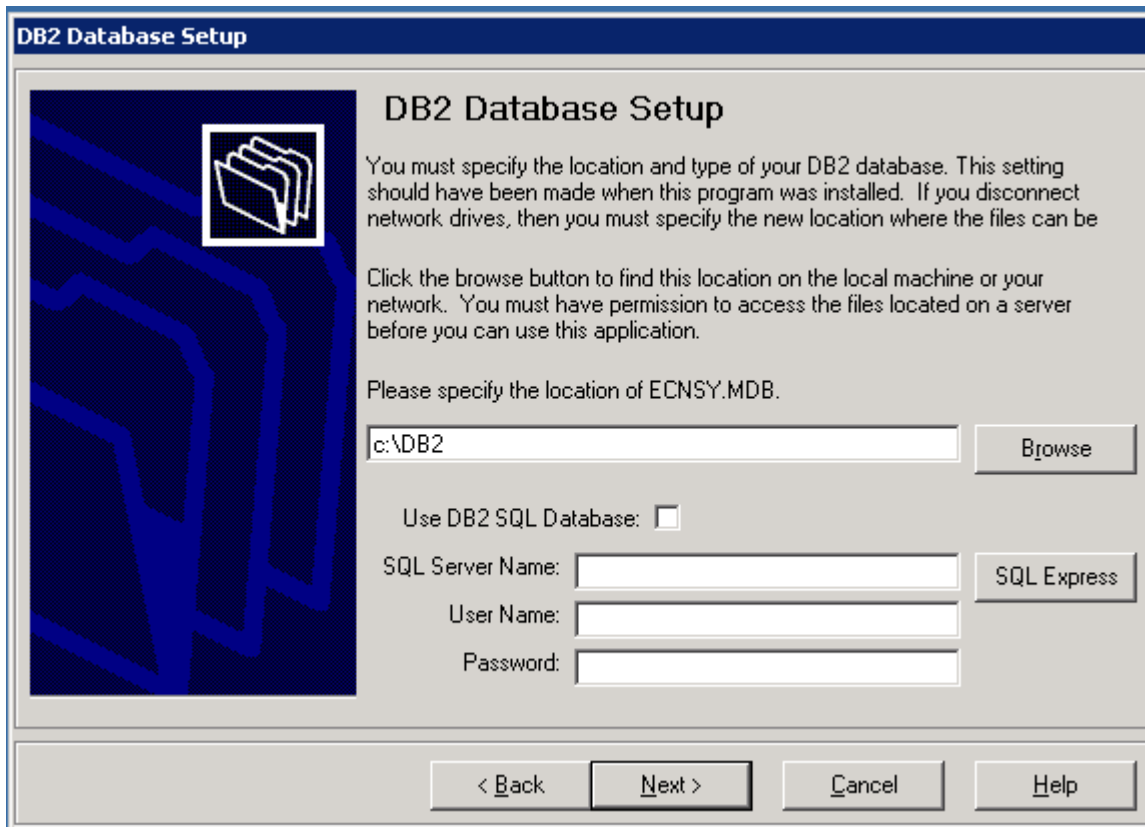
Click an option on the list below to change the authorization status.

ID	Option Description	Status
HA	eServ Menu	Authorized
HD	eServ Accounts Receivable	Expired
HE	eServ Order Entry	Expired
HF	eServ Favorites	Expired
HL	eServ Secure Sockets Layer	Expired
HO	eServ Current Orders	Expired
HP	eServ Order Approval	Expired
HQ	eServ Email Notifications	Expired

DB2 Database Setup

Your location should have been set by the installer. Refer to the separate instructions for setting up DBx to use an SQL database.

Click the Next Button to continue.



The screenshot shows a Windows-style dialog box titled "DB2 Database Setup". On the left is a blue graphic with a folder icon. The main area contains instructions and input fields. The text reads: "You must specify the location and type of your DB2 database. This setting should have been made when this program was installed. If you disconnect network drives, then you must specify the new location where the files can be". Below this is another instruction: "Click the browse button to find this location on the local machine or your network. You must have permission to access the files located on a server before you can use this application." The prompt "Please specify the location of ECNSY.MDB." is followed by a text box containing "c:\DB2" and a "Browse" button. There is a checkbox for "Use DB2 SQL Database:" which is unchecked. Below that are three text boxes for "SQL Server Name:", "User Name:", and "Password:", with an "SQL Express" button to the right of the first one. At the bottom are four buttons: "< Back", "Next >", "Cancel", and "Help".

DB2 Database Setup

You must specify the location and type of your DB2 database. This setting should have been made when this program was installed. If you disconnect network drives, then you must specify the new location where the files can be

Click the browse button to find this location on the local machine or your network. You must have permission to access the files located on a server before you can use this application.

Please specify the location of ECNSY.MDB.

c:\DB2

Use DB2 SQL Database:

SQL Server Name:

User Name:

Password:

< Back

Set DDMS Database Locations

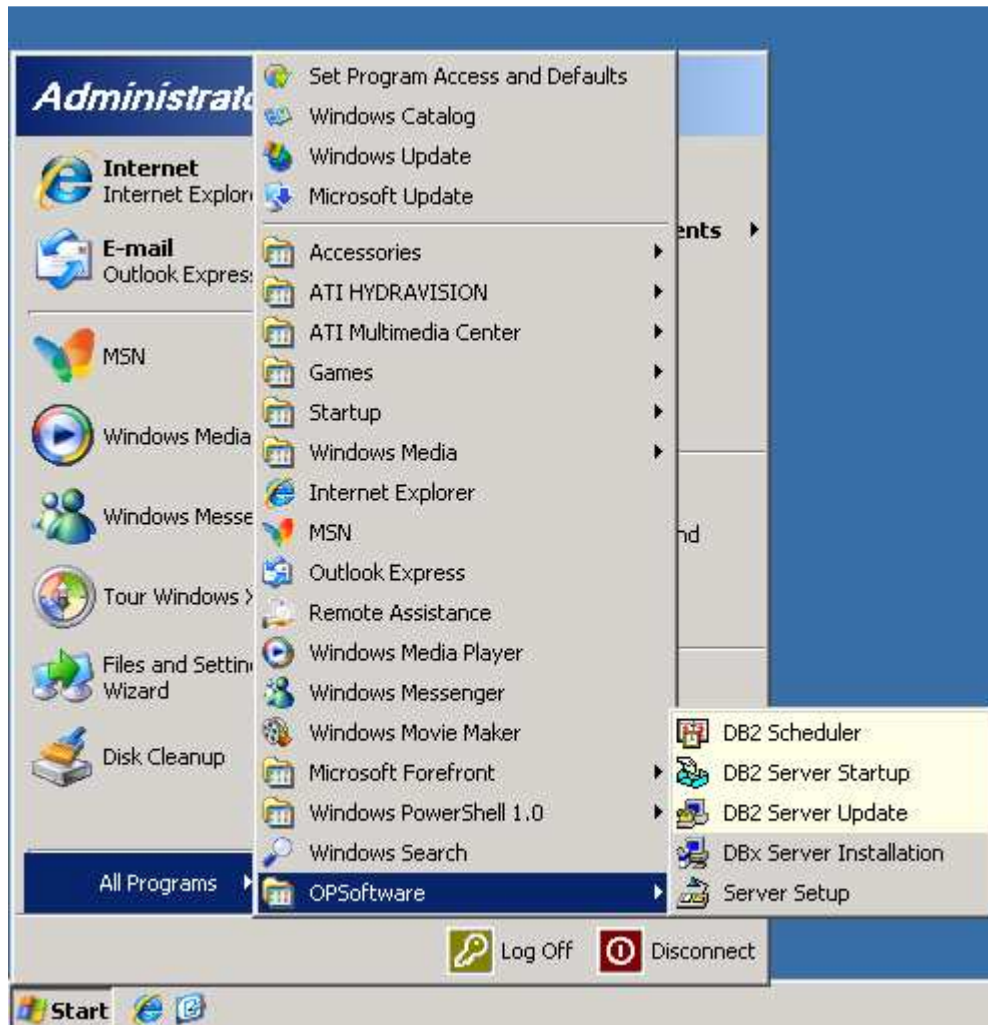
Click the Set DDMS Database Locations link from the main Server Setup. You will be asked for the locations of each DDMS file used by DBx. This information about your DDMS can be found in the LO Parameters Screen.

Important! When asked for a location, do not enter a leading zero as in '01' .Simply enter '1' or '2' for the location codes.

Continue to click the Next Button through all the DDMS file locations. When you return to the main Server Setup, click Close to finish the setup.

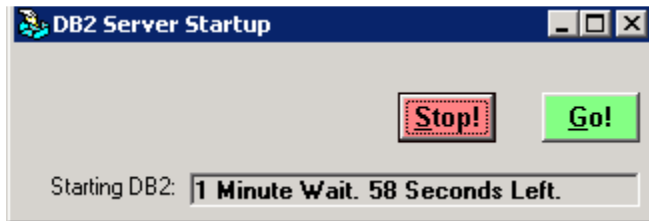
Final Steps

As part of the installation, links to the most commonly used DBx programs have been placed in your Start menu. You can use these links to return to Server Setup if you were interrupted.



Starting DBx for the first time

Choose Start – All Programs – OPSsoftware – DB2 Server Startup. You can click the Go Button to start the server without waiting.



Where did it go?

When the DBx Server starts, it checks your system and then goes to sleep in your system tray. Your system tray is the group of icons normally found in the lower right portion of your screen with the time.



System Update

The first time the server starts, it will attempt to run a system update to make sure all your files are current. While this is happening, the traffic light will be yellow.

Updating Your Data

After installing DBx, you should update your data for the first time. To do this, the DBx Server must be started. Look in your system tray for a traffic light icon and make sure it is Green.

Right-Click the traffic light Icon and choose 'Menu'.

Click the DDMS Import Menu

Click Full Update of All Data

DBx will start the update process. This can take over an hour to complete.